

CUSTOM DESIGN & DEVELOPMENT CORPORATION
 6700 BIRWOOD BLVD.
 SUITE 305
 MARIETTA, GA 30071
 TEL: (770)-588-8888
 FAX: (770)-576-8888

**ELECTRICAL PLAN
 NOTES & SCHEDULE**

REVISION	BY

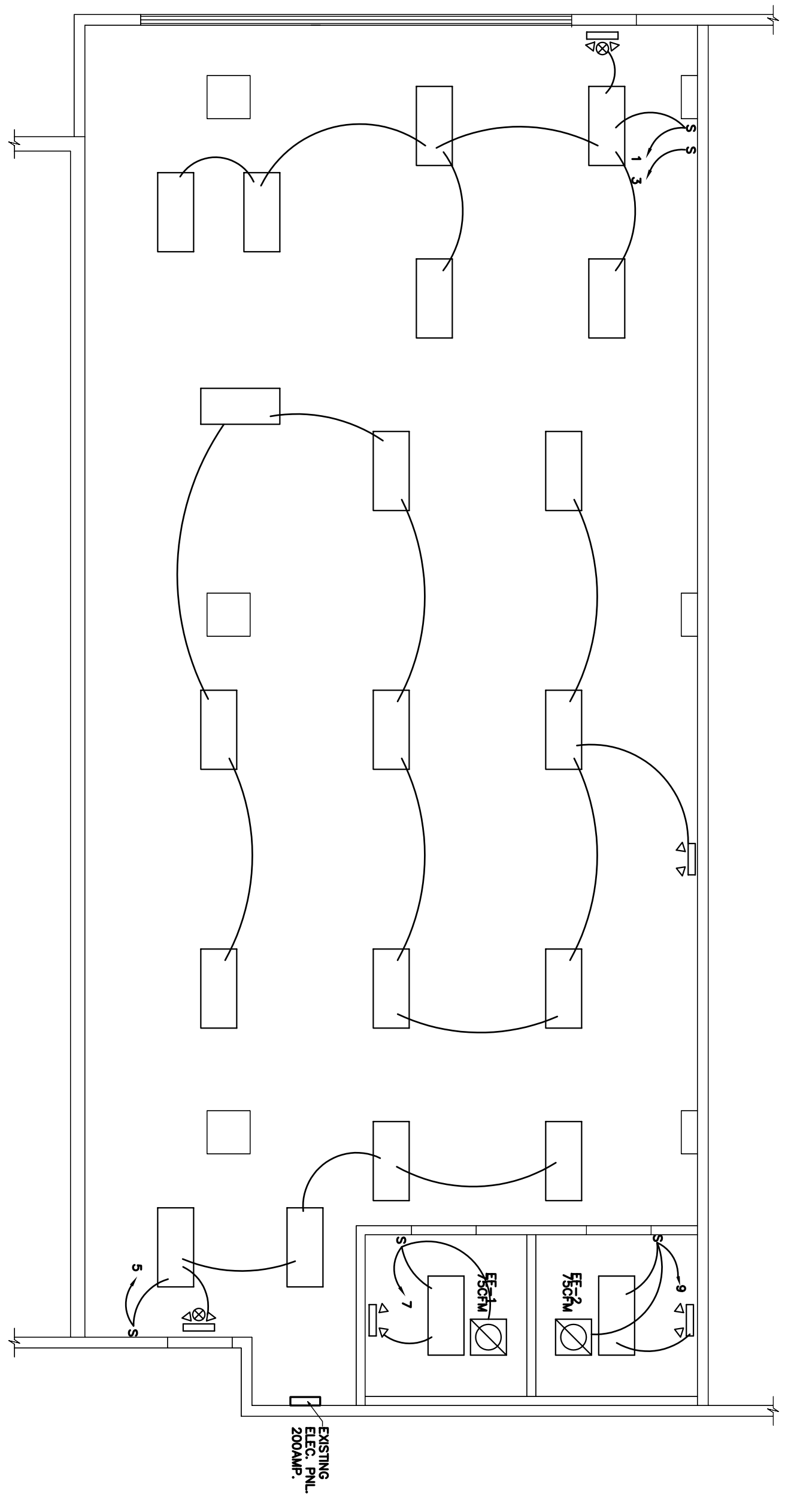
DRAWN BY:
 SCALE: AS NOTED
 PROJECT NO:
 DATE: 04/23/15
 SHEET
E1
 OF
 SHEETS

ELECTRICAL PLAN SPECS:

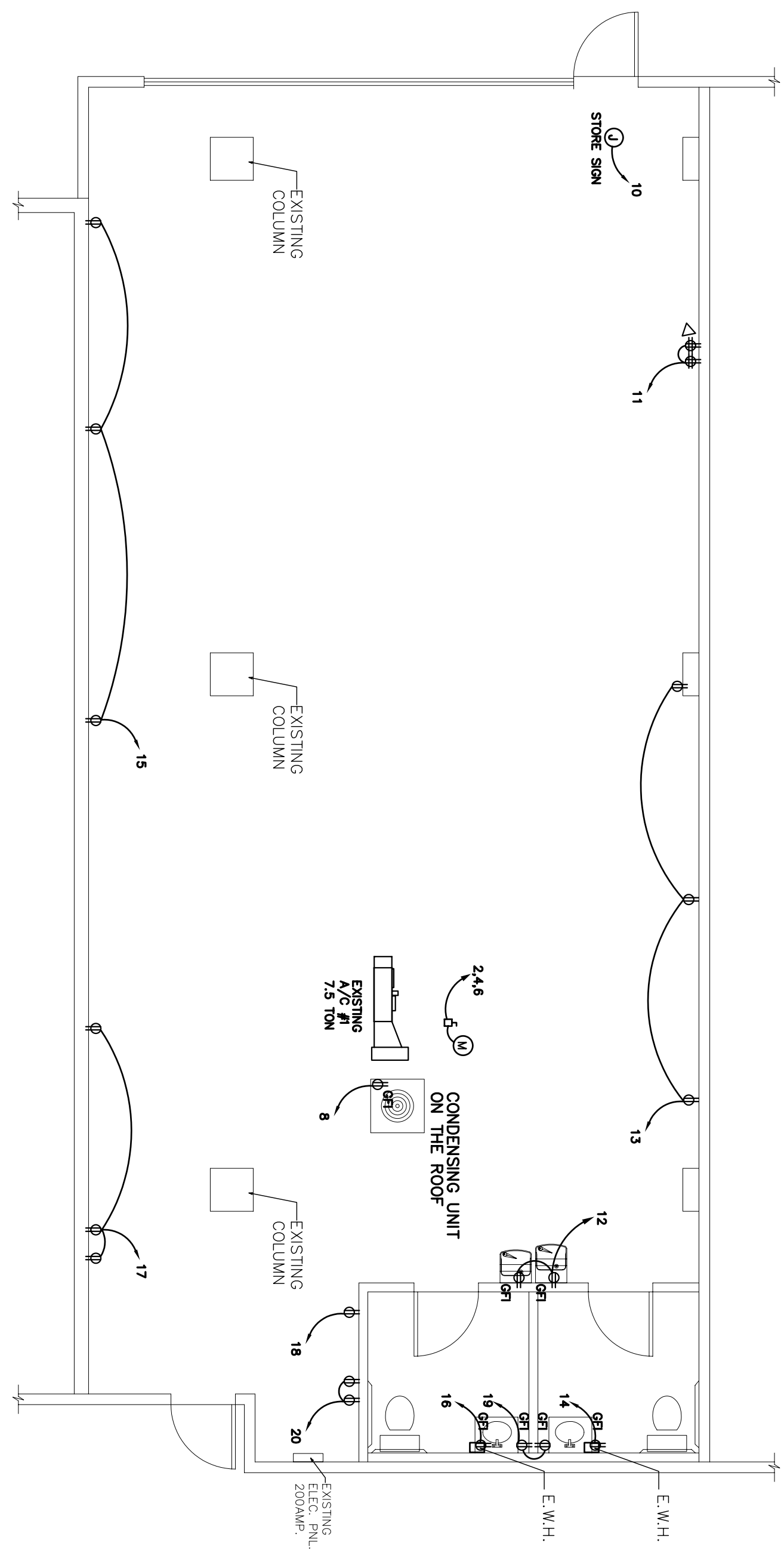
ELECTRICAL CONTRACTOR TO FURNISH ALL LABOR, MATERIALS AND EQUIPMENT FOR A COMPLETE ELECTRICAL INSTALLATION. FIXTURES TO BE INSTALLED BY ELECTRICAL CONTRACTOR AND FURNISHED BY GENERAL CONTRACTOR. ALL WORK TO CONFORM TO REQUIREMENTS OF THE NATIONAL ELECTRICAL CODE AND APPLICABLE STATE AND LOCAL CODES.
 WORKMANSHIP TO BE IN ACCORDANCE WITH BEST PRACTICES OF THE TRADE AND PERFORMED BY SKILLED WORKERS.
 GENERAL CONTRACTOR SHALL OBTAIN AND PAY FOR FEES AND PERMITS REQUIRED AND FURNISH CERTIFICATIONS OF INSPECTION.
 MATERIAL TO BE U.L. APPROVED AND LABELED.
 PANEL BOARDS TO BE SQUARED D, TYPE NCOB OR EQUAL.
 RECEPTACLES TO BE SPECIFICATION GRAY RECEPTACLES W/ GRAY FACE PLATE.
 ALL ELECTRICAL EQUIPMENT AND SYSTEMS SHALL BE TESTED AND ADJUSTED FOR PROPER OPERATION.
 GENERAL CONTRACTOR IS RESPONSIBLE FOR ALL NECESSARY EXCAVATING, BACKFILLING, CUTTING AND REPAIRING FOR THE INSTALLATION OF THE ELECTRICAL WORKS.
 ELECTRICAL SERVICE TO BE UNDERGROUND UNLESS NOTED.
 GENERAL CONTRACTOR TO COORDINATE WITH CABINET MAKER THE INSTALLATION OF OUTLETS, ETC. IN FRONT DESK BUSINESS OFFICE WALL.
 ELECTRICAL CONTRACTOR TO FURNISH AND INSTALL WEATHERPROOF DISCONNECTS AT WALL NEAR A/C LOCATION.
 HVAC CONTRACTOR TO WIRE CONDENSOR FROM DISCONNECTS AND WIRE THERMOSTATS.
 ALL DENTAL EQUIPMENT TO BE INSTALLED BY SUPPLIER AND CONNECTED BY PLUMBING AND ELECTRICAL CONTRACTORS.
 GENERAL CONTRACTOR TO COORDINATE INSTALLATION DATE WITH A.D.A.
 ALL RECEPTACLES ARE DIMENSIONED TO CENTER OF ROUGH IN BOX.
 SEE ALSO REFLECTED CEILING PLAN AND SPECIFICATIONS AND INSTALLATION SCHEDULE.
 GENERAL CONTRACTOR TO INCLUDE IN THE COST OF CONSTRUCTION THE COST OF PREPARING A PANELBOARD SCH. SIZE AND LOCATION OF PANELBOARD, WETER LOCATION, LOAD CALCULATIONS, RISER DIAGRAM, ETC. AS REQUIRED BY LOCAL CODES. DRAWINGS MAY BE DRAWN BY CONTRACTOR OR SUBCONTRACTOR AND ADDED TO THE A.D.A. CONTRACT DOCUMENTS.
 ALL OUTLETS IN TREATMENT AREA TO BE GROUNDED PER N.F.P.A. 70, (NATIONAL ELECTRIC CODE, 2014) SEC. 517-13. COLOR TO BE WHITE. VERIFY WITH OWNER.
 WHERE CONDUIT ENDS IN WALL, BRING ABOVE CEILING FOR ACCESS FROM ABOVE.
 CONTRACTOR TO CONFIRM T.V. AND/OR MONITOR WIRING WITH OWNER.

SYMBOL LEGEND

- PANELBOARD
- DISCONNECT
- ⊕ RECEPTACLE, 240 VOLTS
- ⊕ RECEPTACLE, 110 VOLTS (4-8" HIGH, 8-42" HIGH, C-8" HIGH)
- ⊕ QUAD RECEPTACLE
- CONDUIT RUN - ARROW DENOTES HORIZONTAL
- CONDUIT UNDER SLAB OR BELOW GRADE
- EXPOSED CONDUIT
- 2 X 4 LAY IN - (4) 12W LAMP
- WALL MTD BATHROOM FIXTURE- 75W LAMP
- ⊕ EXT/EMERGENCY UNIT W/ BATTERY BACKUP
- ⊕ EMERGENCY LIGHT UNIT W/ BATTERY BACKUP
- ⊕ SWITCH
- ⊕ NETWORK & PHONE
- ⊕ NETWORK
- ⊕ PHONE



LIGHTING PLAN
 3/16" = 1'-0"



POWER PLAN
 3/16" = 1'-0"

LIGHTING FIXTURE SCHEDULE

TYPE	DESCRIPTION	NOTES
□	2X4 FLUORESCENT LIGHT FIXTURE, IF NEW, MATCH EXISTING OR PROVIDE METALUX-2EP35X4 (3) LAMP PARABOLIC SEMI-SPECULAR LAMPER 18 GELL	1. REFER TO ARCHITECTURAL REFLECTED CEILING PLAN FOR EXACT LOCATION OF ALL LIGHT FIXTURES.
⊕	EXIT SIGN BACK MOUNTED WHITE PLASTIC RED LETTERS	
⊕	EGRESS LIGHT WALL MOUNTED 12" DOWN FROM CEILING	

LIGHTING FIXTURE NOTES

- REFER TO ARCHITECTURAL REFLECTED CEILING PLAN FOR EXACT LOCATION OF ALL LIGHT FIXTURES.

EXISTING PANELBOARD "A" SCHEDULE

CIRCUIT NO	TO SERVE	LOAD		200AMP	M.L.O.	CIRCUIT BREAKER		TO SERVE	CIRCUIT NO
		KW	TRIP-POLES			TRIP-POLES	KW		
1	LIGHTS (FRONT AREA)	0.72	20/1	—	—	60/3	11.25	EXISTING A/C #1 7.5TON	2
3	LIGHTS (FRONT AREA)	1.08	20/1	—	—	—	—	—	4
5	LIGHTS (BACK AREA)	0.48	20/1	—	—	—	—	—	6
7	FAN & LIGHTS (RESTROOM)	1.2	20/1	—	—	—	—	CONDENSING UNIT ON ROOF	8
9	FAN & LIGHTS (RESTROOM)	1.2	20/1	—	—	—	—	STORE SIGN	10
11	RECEPT	1.0	20/1	—	—	—	—	D.F.	12
13	RECEPT	1.0	20/1	—	—	—	—	W.H.	14
15	RECEPT	1.0	20/1	—	—	—	—	W.H.	16
17	RECEPT	1.0	20/1	—	—	—	—	RECEPT (BACK AREA)	18
19	RECEPT (RESTROOM)	1.0	20/1	—	—	—	—	RECEPT (BACK AREA)	20
21	SPARE	—	—	—	—	—	—	—	22
23	SPARE	—	—	—	—	—	—	—	24
25	SPARE	—	—	—	—	—	—	—	26
27	SPARE	—	—	—	—	—	—	—	28
29	SPARE	—	—	—	—	—	—	—	30
31	SPARE	—	—	—	—	—	—	—	32
33	SPARE	—	—	—	—	—	—	—	34
35	SPARE	—	—	—	—	—	—	—	36
37	SPARE	—	—	—	—	—	—	—	38
39	SPARE	—	—	—	—	—	—	—	40
41	SPARE	—	—	—	—	—	—	—	42

CONNECTED LOAD : 31.93 KW X 1000 / 1.732 / 208 = 89.0 AMPS

ALL BRANCH BREAKERS NOT SPECIFIED SHALL BE 20 AMP, SINGLE POLE
 ALL BRANCH CIRCUITS CONDUCTORS NOT SPECIFIED SHALL BE #12 WIRE WITH #12 GROUND

* HACR BREAKER