

MECHANICAL NOTES

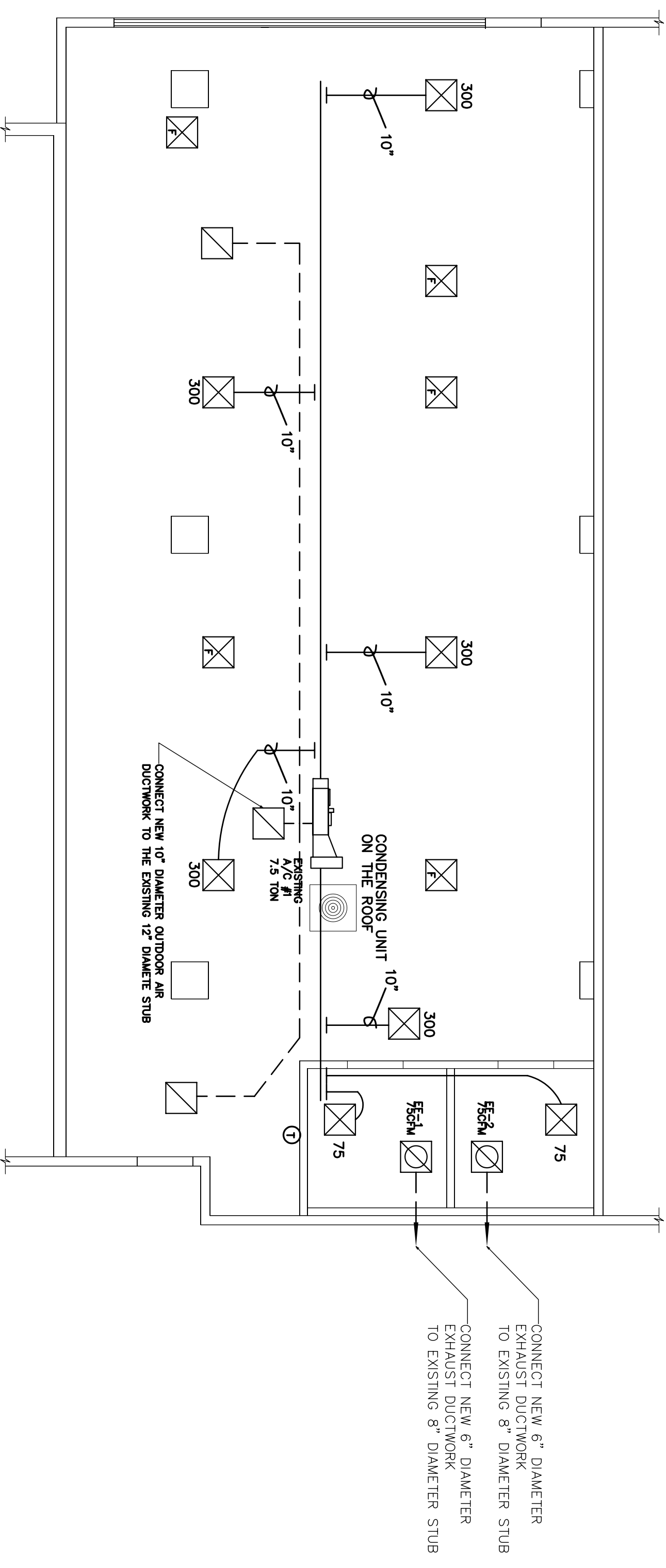
- Mechanical contractor shall obtain the mechanical permit for the work.
- Contractor shall make the setting foundation air condition equipment operable from the ground level to meet the current code requirements.
- Duct work shall pass leak test.
- Clean all existing air handling diffusers in the space
- All fans supplying more than 2000 cfm shall be installed with a smoke detector in compliance with Section 606.2.1 of the IMC. The smoke detector shall be wired to stop the fan upon detection of smoke.

AIR CALCULATION

FRESH AIR PROVIDED BASED ON IMC TABLE 403.3 25 CFM/PERSON AT NON-SMOKING AREA, AND REQUIRER FRESH AIR CALCULATION AS FOLLOWS:

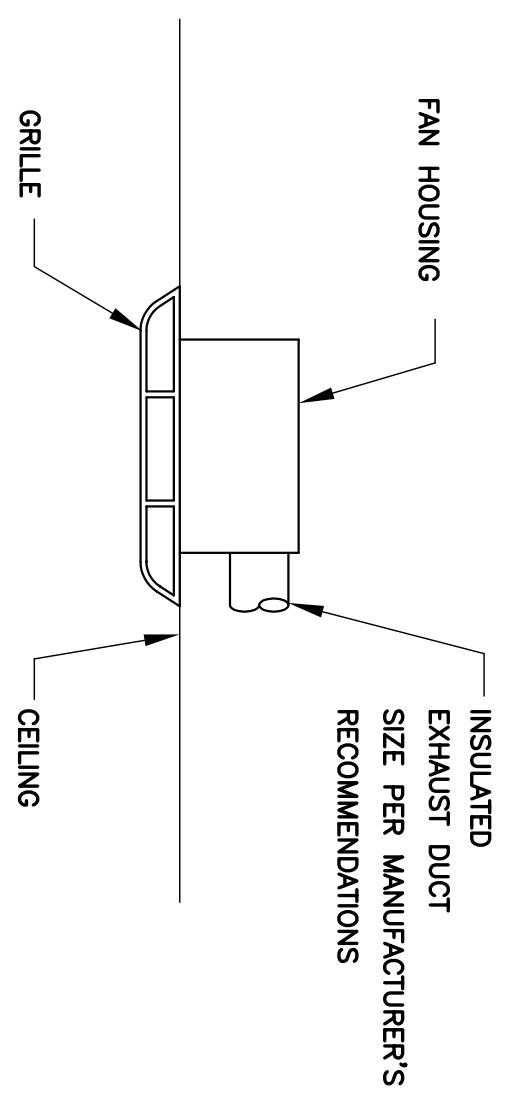
- NON SMOKING
 $(5/1000) \times (1682 - (8.31 \times 5)) + (1682 \times 0.06) = (42 + 100) = 142$

142 CFM (FRESH AIR REQUIRED)

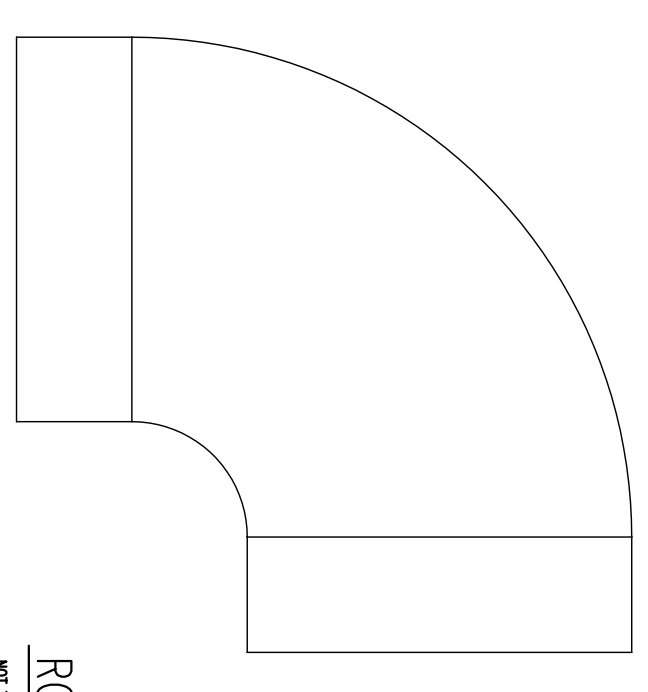


HVAC PLAN
3/16" = 1'-0"

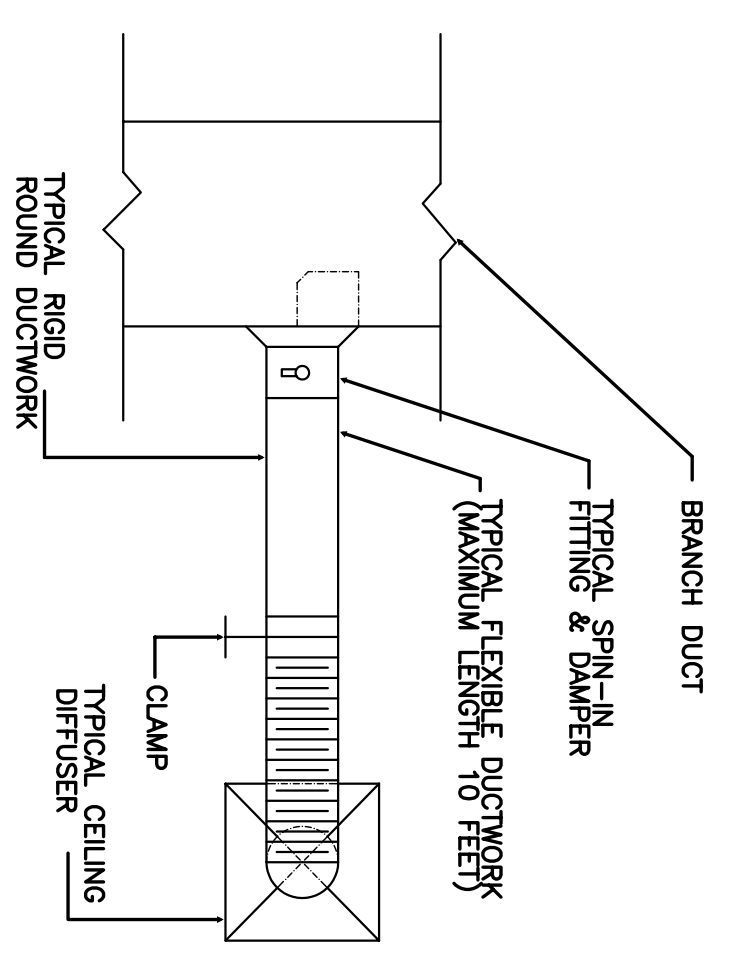
① PROGRAMMABLE THERMOSTAT
F : WILL BE DONE BY TENANT IN THE FUTURE.



EXHAUST FAN DETAIL
NOT TO SCALE



ROUND ELBOW - DETAIL
NOT TO SCALE



TYPICAL RIGID ROUND DUCT TAKE - OFF

NOTE
REFER TO FIGURE 2-3 IN SWACNA LOW PRESSURE SHEET METAL CONSTRUCTION STANDARDS; AND FIGURE 2-9 IN FIBROUS GLASS DUCT CONSTRUCTION STANDARDS. VANES TO BE DOUBLE-THICKNESS FOR SUPPLY AIR ELBOWS.

NOTE:
Low pressure insulated flexible duct shall be designed in accordance with ACCA (Air Conditioning Contractors of America) duct sizing calculation based on a friction loss of 0.1 inches of water per 100 feet of duct.
The diameter and amount of radius bends will also affect the calculated air flow. The diameter and amount of radius bends will also affect the calculated air flow. The duct to prevent oval flex as recommended by the manufacturer. The following chart is based on straight runs and is taken from the ACCA duct sizing calculations.

CFM	EXHAUST DIAMETER
0 - 80	6"
81 - 165	8"
166 - 300	10"
301 - 500	12"
501 - 650	14"

FAN SCHEDULE

MARK	LOCATION	TYPE	CFM	EXT SP IN W/C	DRIVE	HP	V/PH/Hz	RPW	REMARKS
EF-1	TOILET	CEILING MOUNT	75	0.5	DIRECT	1/8	110/1/60	10	CONNECT TO EXISTING
EF-2	TOILET	CEILING MOUNT	75	0.5	DIRECT	1/8	110/1/60	10	CONNECT TO EXISTING

EXISTING SPLIT SYSTEM

INDOOR UNIT		SYSTEM		DX COOLING		HEATING		OUTDOOR UNIT		REMARKS
SYMBOL	MODEL	FAN ESP.	CFM	OA CFM	ELECTRICAL V/PH	TOTAL CAP (MBH)	EFF (SEER)	CAPACITY (KW)	SYMBOL	MODEL
		0.5	3000	142	208 1	45.54	13.0	15	CU-A	EXISTING