

PROJECT NAME

"WHITE BOX"
 (TOWN BROOKHAVEN)
 305 BROOKHAVEN AVENUE
 SUITE # "1220"
 ATLANTA, GA 30319

INDEX TO SHEETS

- A0 COVER SHEET
- A1 FLOOR PLAN, CEILING PLAN, NOTES & SCHEDULE
- E1 LIGHTING PLAN, POWER PLAN, NOTES & SCHEDULE
- M1 MECHANICAL PLAN, NOTES & SCHEDULE
- P1 PLUMBING PLAN, NOTES & SCHEDULE

PROJECT CRITERIA

INTERIOR FINISH CODE COMPLIANCE REPORT

DATE OF REVIEW: _____ FILE # _____ With This
 NAME OF DEVELOPMENT: "WHITE BOX" (TOWN BROOKHAVEN) SUITE# "1220" ATLANTA, GA 30319
 LOCATION OF DEVELOPMENT: 305 BROOKHAVEN AVENUE SUITE# "1220" ATLANTA, GA 30319
 ARCHITECT: CHARLES CHANG PHONE #: 770-234-9598 GEORGIA REG. #: 5259
 STRUCTURAL ENGINEER: N/A PHONE #: _____ GEORGIA REG. #: N/A

A. Occupancy Classification: BUSINESS
 B. Type of Construction: II B Sprinklered (YES or NO): YES
 C. Seismic Use Group: I Seismic Design Category: C
 D. Total Interior Finish Area (sq. ft.): 1,849
 E. Floor level: FIRST Total number of stories in building: 4
 F. Calculated Occupancy Load: 19
 G. Required Minimum floor Live Load (PSF): EXISTING

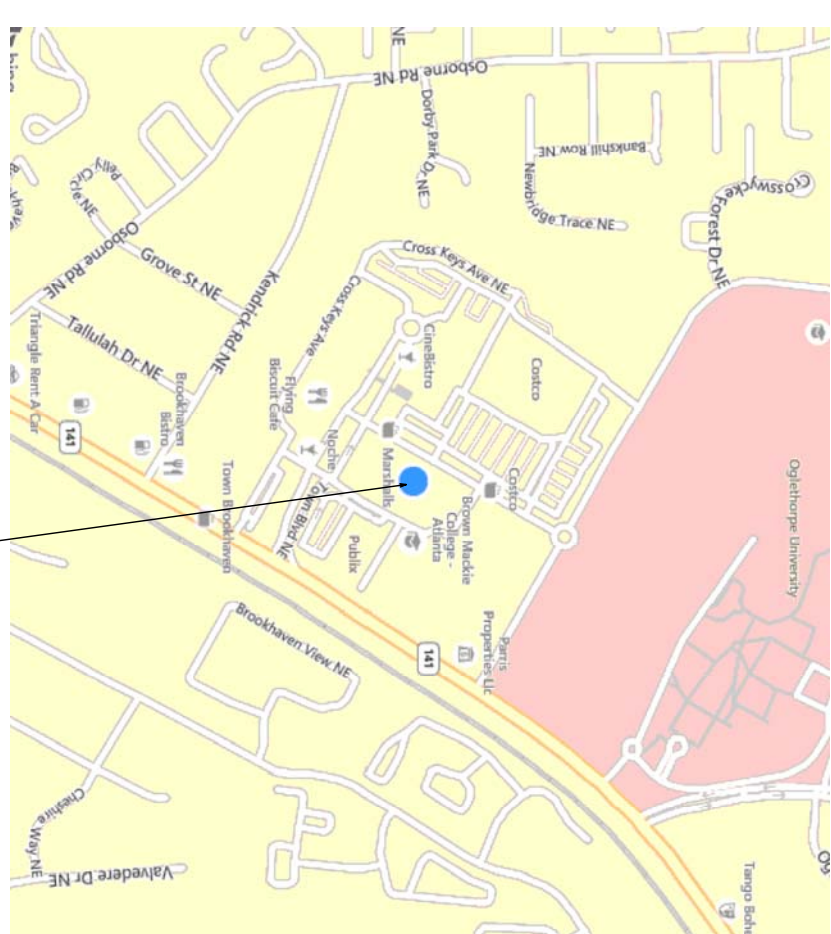
GENERAL CODES

APPLICABLE CODES / YEAR

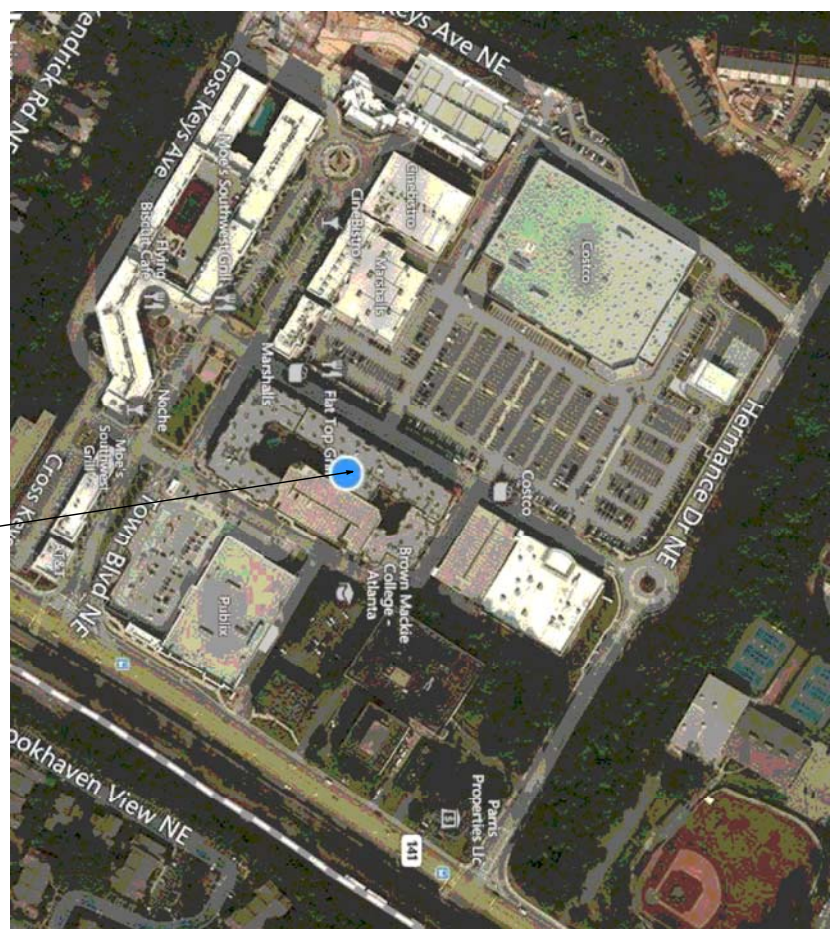
- International Building Code (IBC): 2012 Edition with 2014 & 2015 Amendments
- National Electrical Code (NEC): 2014 Edition
- International Fuel Gas Code (IFGC): 2012 Edition with 2014 & 2015 Amendments
- International Mechanical Code (IMC): 2012 Edition with 2014 & 2015 Amendments
- International Plumbing Code (IPC): 2012 Edition with 2014 & 2015 Amendments
- International Energy Conservation Code (IECC): 2009 Edition with 2011 & 2012 Amendments

FIRE CODES:

- NFPA 101 Life Safety Code: 2012 Edition (*)
- International Fire Code (IFC): 2012 Edition with 2014 Amendments (*)
- (Referenced codes are modified by the State Fire Marshal per Ch. 120-3-3
- O.C.G.A. Title 25 (State Fire Law)
- O.C.G.A. Title 30 (Access to and Use of Public Facilities by Persons with Disabilities)
- 2010 ADA Standards

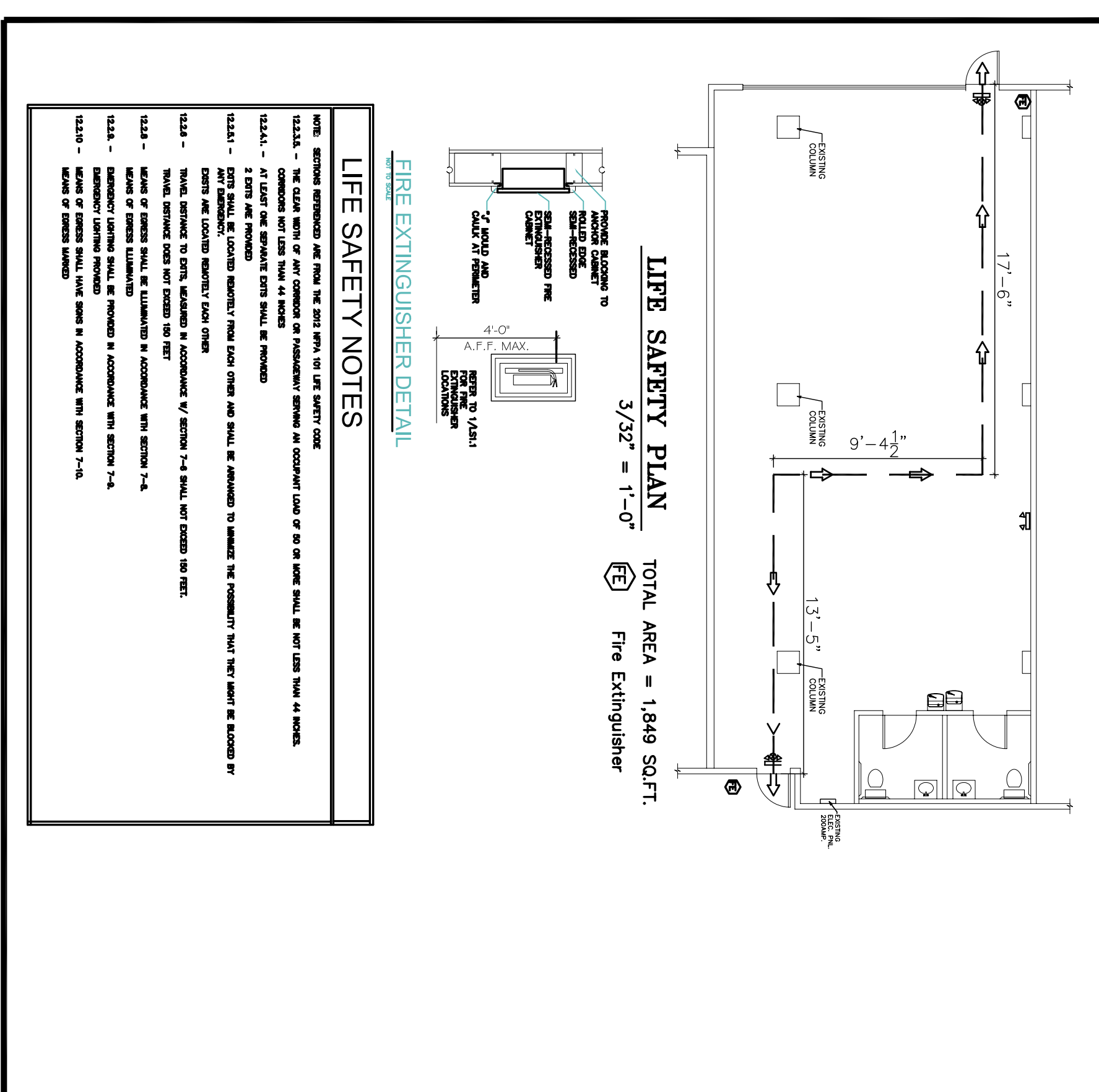


SITE PLAN
N.T.S.

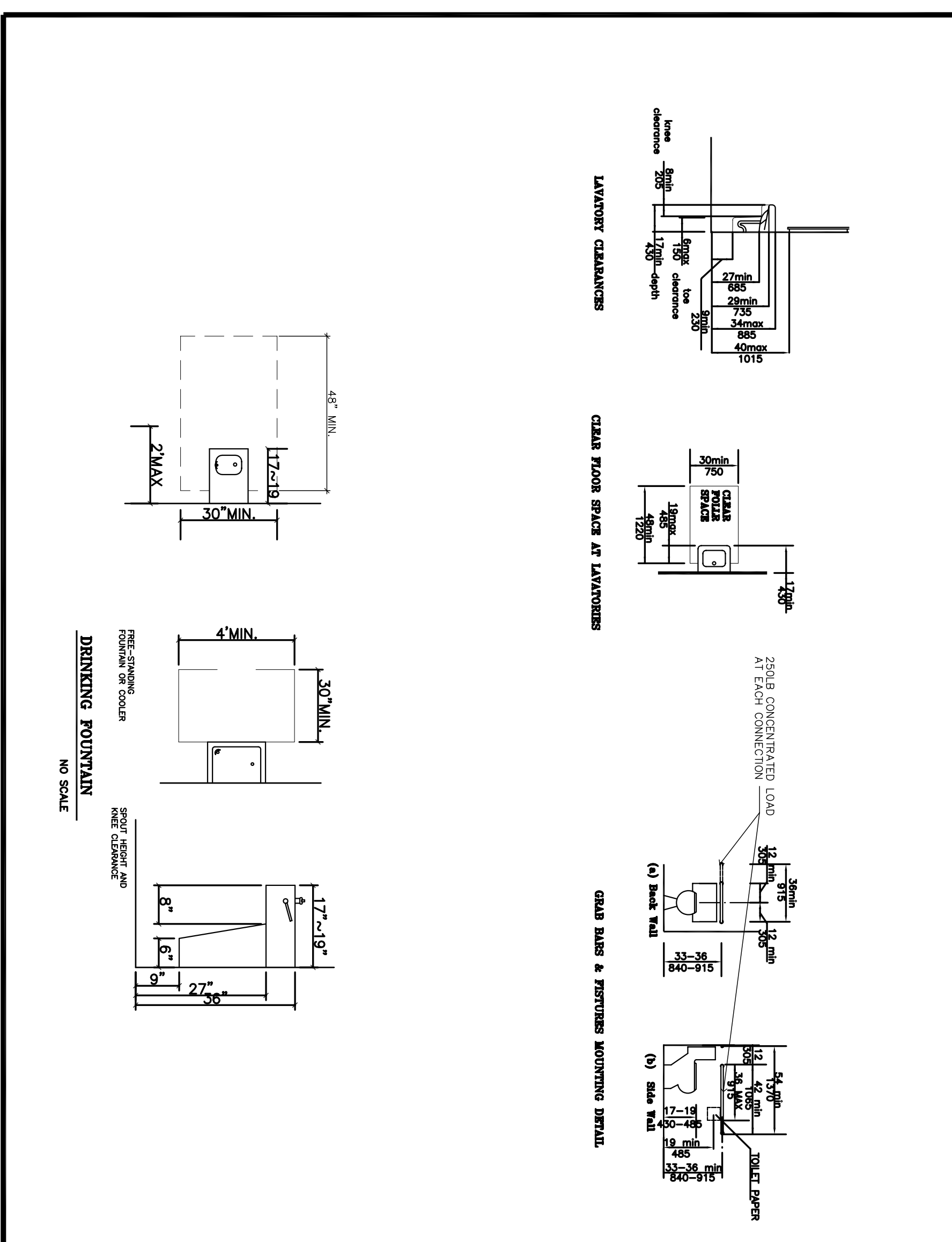


KEY PLAN
N.T.S.

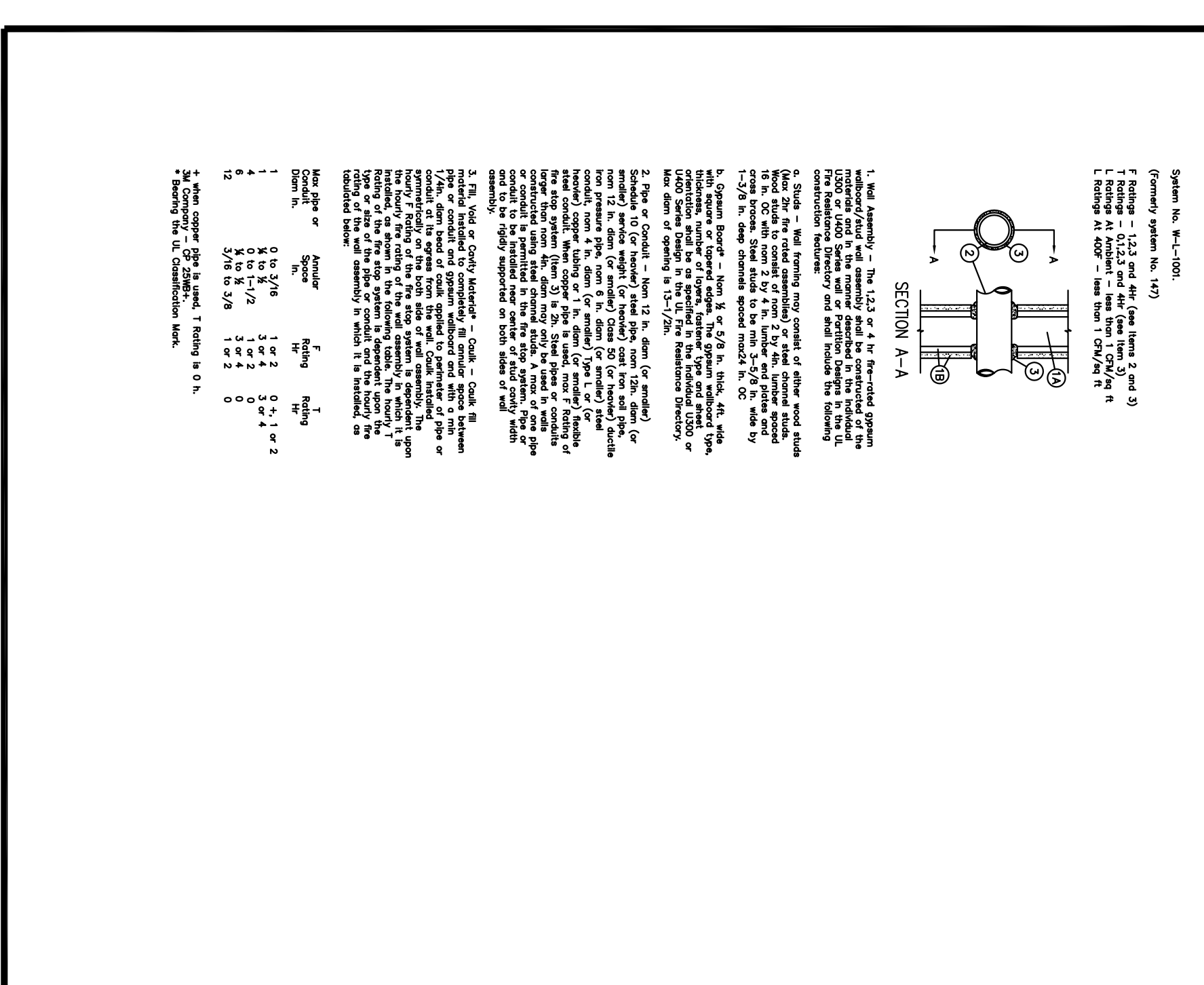
LIFE SAFETY PLAN



ADA DETAILS



FIRE DETAILS



"WHITE BOX"
 (TOWN BROOKHAVEN)
 305 BROOKHAVEN AVENUE
 SUITE# "1220"
 ATLANTA, GA 30319

COVER SHEET
 NOTES & SCHEDULE

CHUNG CHENG
 ARCHITECT

CHUNG CHENG
 ARCHITECT

DATE: 04/23/15
 SHEET
A0
 OF SHEETS

DRAWN BY:
 SCALE: AS NOTED
 PROJECT NO:

REVISION BY: