

PROJECT NAME

ELEVEN HAIR SALON

29 12th. ST. NW.
Suite #A
ATLANTA, GA 30309

INDEX TO SHEETS

A01 COVER SHEET, LIFE SAFETY PLAN
A02 EXISTING FLOOR PLAN AND DEMOLITION PLAN
A03 FLOOR PLAN NOTES & SCHEDULE
A04 MECHANICAL, PLUMBING & ELECTRICAL
A05 PLUMBING PLAN, RISER DIAGRAM, NOTES & SCHEDULE
A06 STATE ENLARGED PLAN AND ADA TITILE REQUIREMENT

CONTACT LIST

5720 BURDOD HWY.
SUITE 200
NORCROSS, GA 30071
TEL: (770)-286-8868
FAX: (678)-278-3896

SCOPE OF WORK

EXISTING HAIR SALON TO EXISTING HAIR SALON
NEW RESTROOM AND HAIR STATION AND SHAMPOO STATION
NEW ELEC LIGHTING AND RECEPTACLE
NEW MECHANICAL WORK

GENERAL CODES

APPLICABLE CODES / YEAR
-International Building Code (IBC), 2012 Edition with 2014, 2015, 2017 & 2018 Georgia State Amendments
-National Electrical Code (NEC), 2017 Edition with 2014 & 2015 Georgia State Amendments
-International Fuel Gas Code (IFGC), 2012 Edition with 2014 & 2015 Georgia State Amendments
-International Mechanical Code (IMC), 2012 Edition with 2014 & 2015 Georgia State Amendments and IPC APPENDIX F.
-International Energy Conservation Code (IECC), 2009 Edition with 2011 & 2012 Georgia State Amendments
-International Swimming Pool and Spa Code, 2012 Edition with 2014 Georgia State Amendments
-International Residential Code for One & Two Family Dwellings (IRC), 2012 Edition with 2014, 2015 & 2018 Georgia State Amendments, and "IRC Appendix F"
-County Construction Code (2015 Edition)
FIRE CODES:
-2012 Georgia Code for Fire, Prevention and Protection Ordinance
-2016 OSHA 1201-3.3 Georgia Minimum Fire Safety Standards
-2012 International Fire Code (Amended by 1201-3-3) 1201-3-3)
-2010 ADA Standards for Accessible Design

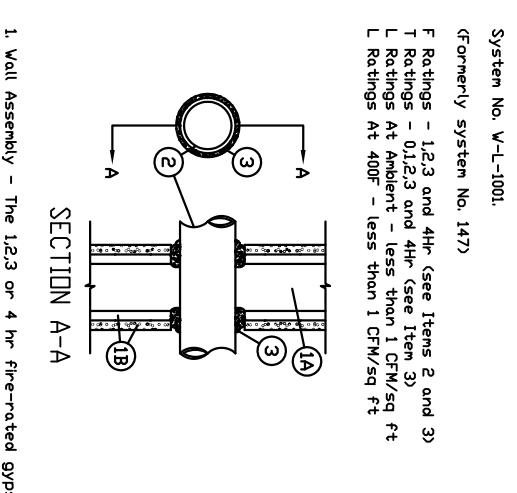
PROJECT CRITERIA

INTERIOR FINISH CODE COMPLIANCE REPORT

DATE OF REVIEW: _____ FILE #: Work Item.
NAME OF DEVELOPER: ELEVEN HAIR SALON
LOCATION OF DEVELOPMENT: 29 12th. ST. NW. Suite #A ATLANTA, GA 30309
ARCHITECT: CHARLES CHANG PHONE #: 404/403-2260 CA. REG. #: 5229
STRUCTURAL ENGINEER: N/A PHONE #: N/A CA. REG. #: N/A
A. Occupancy Classification: BUSINESS II B Sprinklered (YES or NO): YES
B. Type of Construction: I Seismic Design Category: C
C. Seismic Use Group: 2,235
D. Total Interior Finish Area (sq. ft.): N/A
E. Floor level: FIRST Total number of stories in building: SIX
F. Calculated Occupancy Load: 23
G. Required Minimum floor Live Load (PSF): EXISTING

THE CONTRACTOR SHALL OBTAIN INSURANCE ADEQUATE TO INSURE ALL MATERIAL STORED ON OR OFF SITE AND ALL WORK IN PLACE AND SHALL PROVIDE LIABILITY INSURANCE DURING THE CONSTRUCTION PROCESS UNTIL SUCH TIME THAT THE BUILDING IS ACCEPTED BY OWNER FOR OCCUPATION.
ALL EQUIPMENT SHALL BE FURNISHED BY THE OWNER AND INSTALLED BY CONTRACTOR.
THE CONTRACTORS SHALL VERIFY ALL DIMENSIONS AND SITE CONDITIONS BEFORE CONSTRUCTION. THE ARCHITECT SHALL BE INFORMED TO ANY DISCREPANCY.
THE CONTRACTORS SHALL VERIFY THE LATEST ADOPTION OF THE STRONG BUILDING CODE, NATIONAL PLUMBING CODE, NATIONAL ELECTRICAL CODE, OSHA REGULATIONS AND THE REQUIREMENTS OF STATE AND LOCAL AUTHORITIES HAVING JURISDICTION.
THE DESIGN ACCURACY AND SAFETY OF ERECTION, BRACING, SHORING, EMPLOYER SUPPORTS AND CONSTRUCTION MEANS METHODS IS THE SOLE RESPONSIBILITY OF THE CONTRACTOR.
THE CONTRACTORS SHALL VERIFY ALL FLOOR AND ROOF MOUNTED MECHANICAL, EQUIPMENT WEIGHTS, FLOOR/CILING AND ROOF OPENINGS, SIZES AND LOCATIONS WITH ARCHITECTURAL AND MECHANICAL DRAWINGS.
THE CONTRACTORS SHALL COORDINATE AND INSURE THAT THE ARCHITECTURAL, CIVIL, MECHANICAL, ELECTRICAL AND PLUMBING WORKS WITH THE STRUCTURAL.
ALL INTERIOR FINISHES SHALL BE CLASS "A" MIN. FLAME SPREAD AS PER CODE.

WALL DETAILS



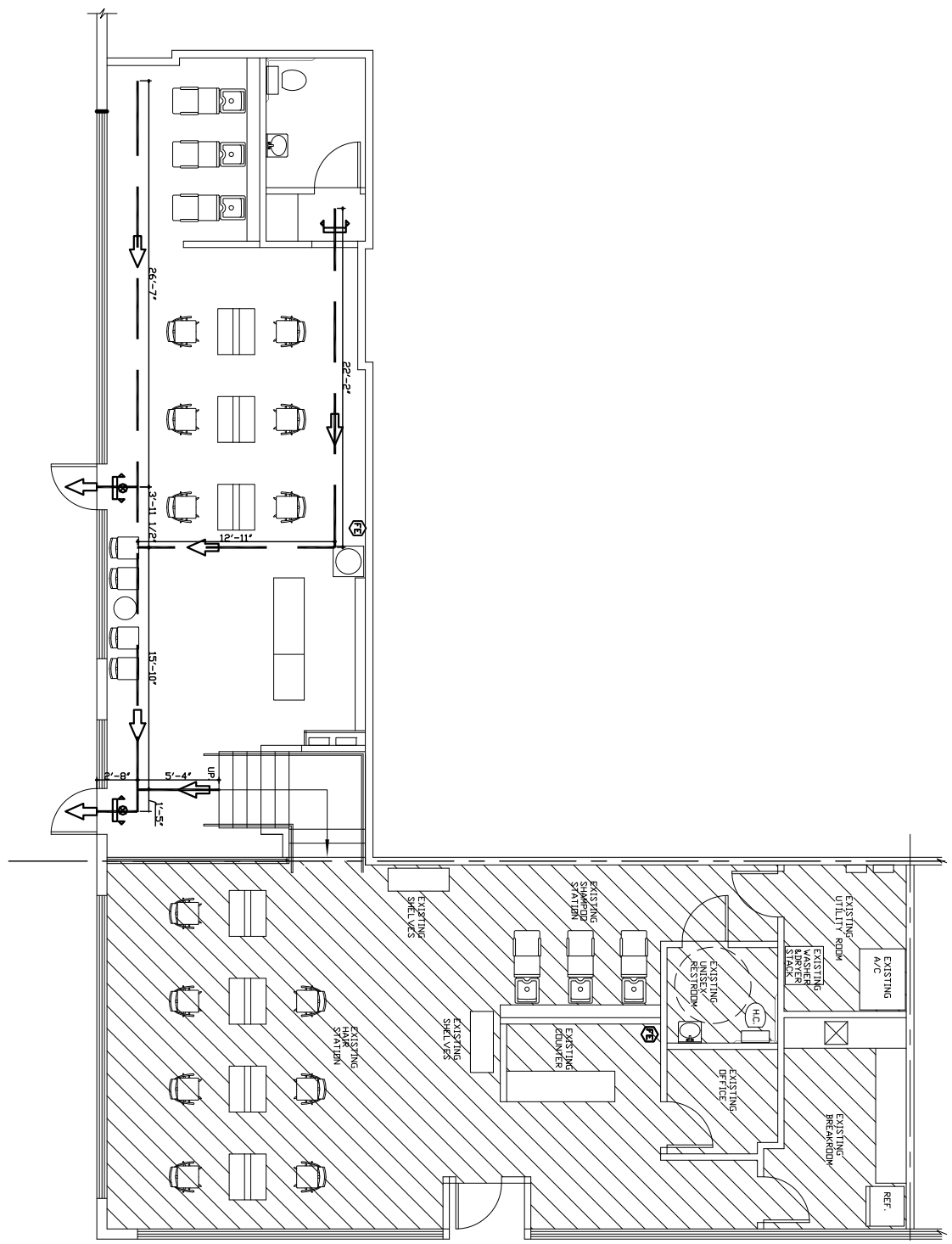
FIRE EXTINGUISHER DETAIL
NOT TO SCALE

LIFE SAFETY NOTES

NOTE: SECTIONS REFERENCED ARE FROM THE 2012 NFPA 101 LIFE SAFETY CODE WITH 2016 AMENDMENTS

- 38.3.6 - WHERE ACCESS TO EXITS IS PROVIDED BY CORRIDORS, SUCH CORRIDORS SHALL BE SEPARATED FROM USE AREAS BY WALLS HAVING A FIRE RESISTANCE RATING OF NOT LESS THAN 1 HOUR IN ACCORDANCE WITH 8.2.3.
- 38.2.4 - 3 EXITS ARE PROVIDED
- 38.2.5 - MEANS OF EGRESS SHALL BE ARRANGED IN ACCORDANCE WITH SECTION 7.5.
- 38.2.6 - TRAVEL DISTANCE TO EXITS, MEASURED IN ACCORDANCE W/ SECTION 7.6 SHALL NOT EXCEED 200 FEET.
- 38.2.8 - MEANS OF EGRESS SHALL BE ILLUMINATED IN ACCORDANCE WITH SECTION 7.8.
- 38.2.9 - EMERGENCY LIGHTING SHALL BE PROVIDED IN ACCORDANCE WITH SECTION 7.9.
- 38.2.10 - MEANS OF EGRESS SHALL HAVE SIGNS IN ACCORDANCE WITH SECTION 7.10.

LIFE SAFETY PLAN



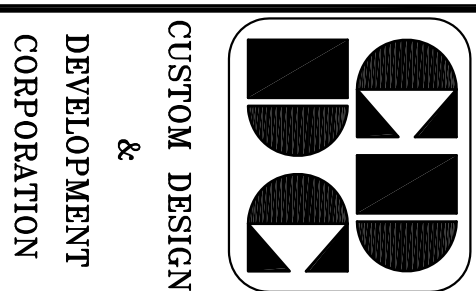
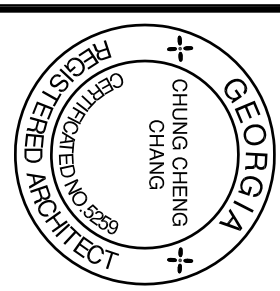
LIFE SAFETY PLAN

3/32" = 1'-0"

FIRE EXTINGUISHER
2,235OZ SAFETY/20 = 23
BUSINESS (MEXAS10) (CLASS)
23 OCCUPANTS

ELEVEN HAIR SALON

29 12th. ST. NW.
Suite #A
ATLANTA, GA 30309



CUSTOM DESIGN
&
DEVELOPMENT
CORPORATION
6750 BURDOD HWY.
SUITE 200
NORCROSS, GA 30071
TEL: (770)-286-8868
FAX: (678)-278-3896

COVER SHEET
NOTES & SCHEDULE

REVISION BY

DRAWN BY

SCALE: AS NOTED

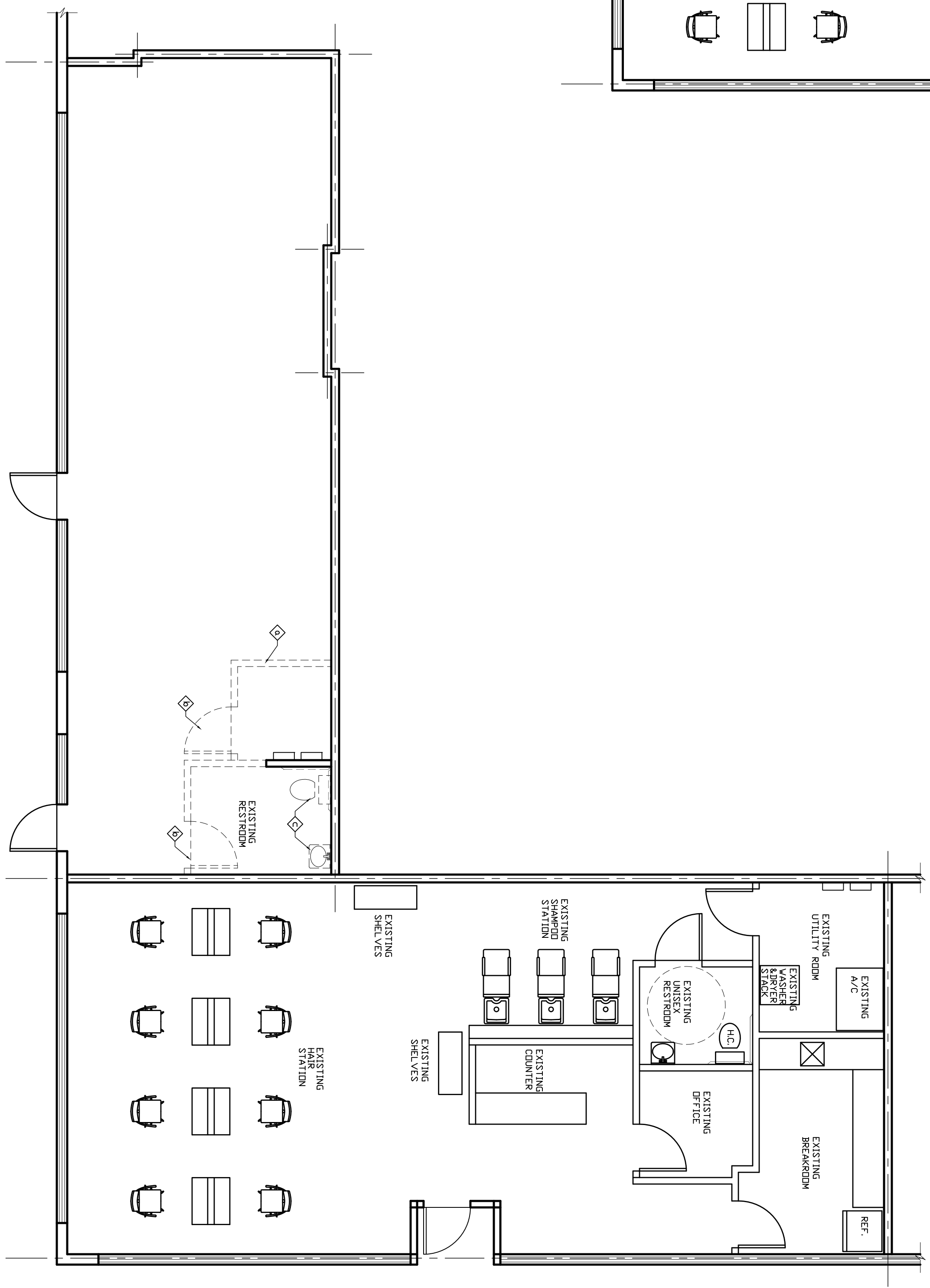
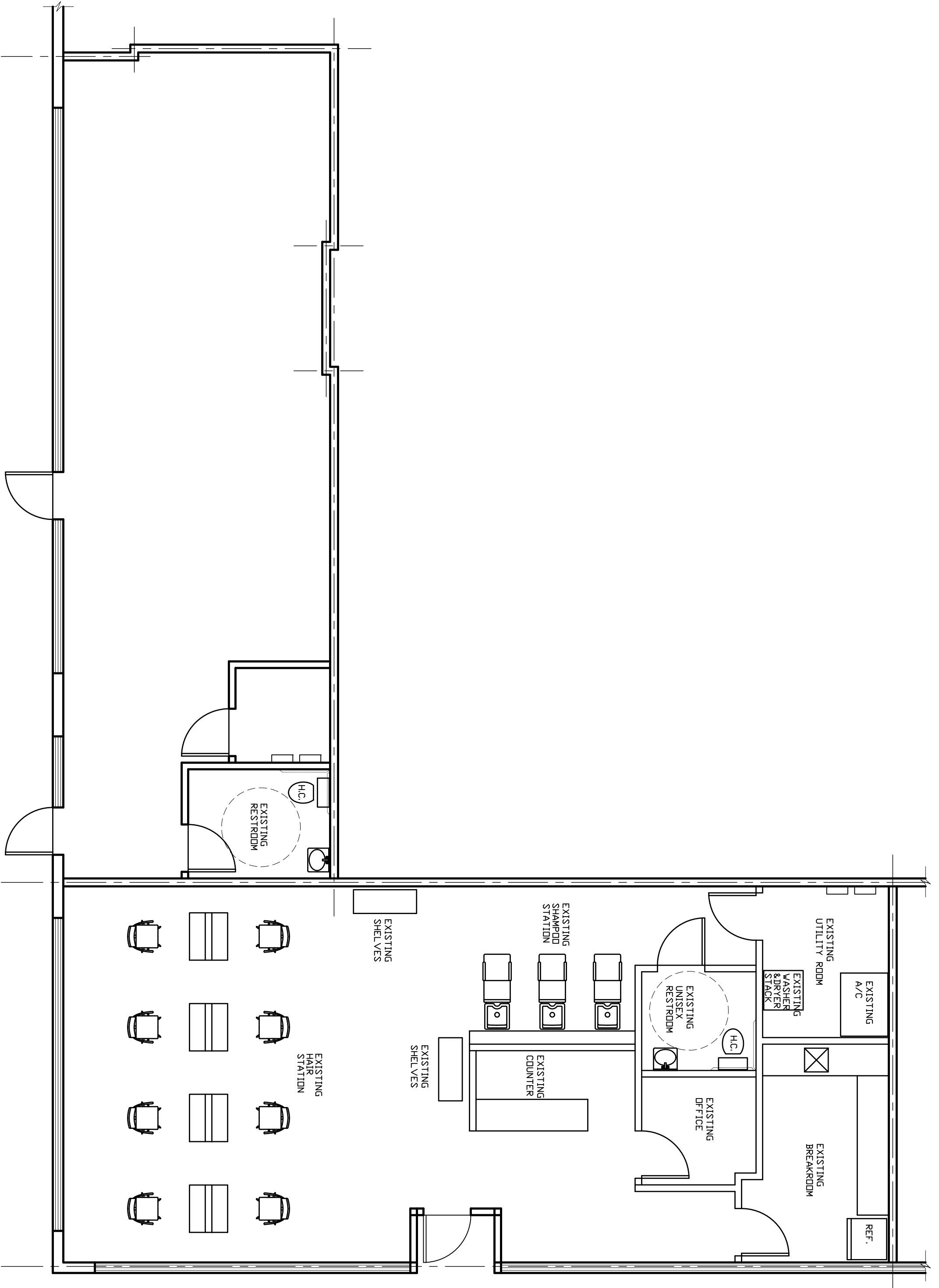
PROJECT NO.

DATE: 09/28/18

SHEET

A0.1

OF SHEETS

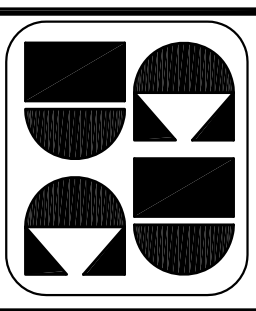
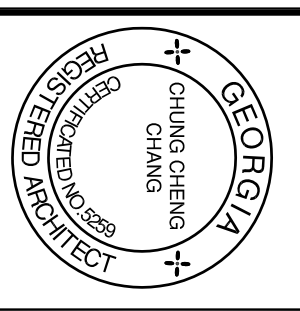


NOTE FOR DEMOLITION, REMOVAL, SALVAGE, ALTERATIONS
PART 1 GENERAL

- A. Related documents:**
Drawings and general provisions of Contract, including General and Supplementary Conditions and OSHA requirement.
- B. Scope**
(1) Work includes but not limited to the following:
a. Remove existing interior partition wall
b. Remove existing door
c. Remove existing restroom
- (2) Work related to mechanical and electrical disconnection or future connections.
- C. Scheduling/Existing Services disruption:**
(1) Before commencing any work, notify owner 72 hours in advance.

- D. Protection:**
- (1) **Safety Protection:** Provide, erect and maintain lights, barriers weather protection, warning signs and other items as required for proper protection of the workmen engaged in demolition operation.
- (2) **Dust protection:** Take necessary precautions to prevent dust and dirt from rising by wetting demolished masonry, concrete, gypsum wallboard and similar debris.
- (3) **Fire Protection:** Provide adequate fire protection in accordance with DeKalb County Fire Department requirements
- A. Workmanship:**
- (1) Demolition and removal: Shall be as shown on the drawings.
- (2) Perform such work required with due care.
- (3) Salvage to Owner: Reusable materials or items, which are salvaged, become the property of the owner, and shall be stored or disposed of as the Owner's directs.
- (3) Minimized Disturbance: Execute the work in a careful and orderly manner, with the least possible disturbance to the public.
- B. Cleaning Up:** Remove debris in accordance with the General and Supplementary Conditions. Maintain the premises in a neat and clean condition.

ELEVEN HAIR SALON
29 12th. ST. NW.
Suite #A
ATLANTA, GA 30309



CUSTOM DESIGN & DEVELOPMENT CORPORATION
5720 BIRWOOD HWY.
SUITE 200
NORCROSS, GA 30071
TEL: (770)-586-8686
FAX: (678)-278-3886

**EXISTING FLOOR PLAN
DEMOLITION PLAN
NOTES & SCHEDULE**

REVISION	BY

DESIGNED BY: _____
SCALE: AS NOTED
PROJECT NO: _____
DATE: 09/28/18
SHEET _____
A0.2
OF SHEETS

GENERAL NOTES

- All works shall be performed in accordance with all applicable codes and local ordinance.
- All Mechanical and Electrical works shall conform to their respective National codes of latest edition and local ordinances.
- Contractor to obtain all permits and execute all work in accordance with all local and applicable building codes and requirements.
- The contractor shall provide and maintain certifications of insurance for workers compensation, public liability, and property damage for the limits as required by law and the landlord.
- All structural wood framing shall be labeled fire retardant treated lumber.
- All dimensions are approximated and must be verified in the field.
- Contractor shall provide adequate bracing or shoring for all work during the construction period.
- All interior finishes shall be class 1A/1B/1C/1D/1E/1F/1G/1H/1I/1J/1K/1L/1M/1N/1O/1P/1Q/1R/1S/1T/1U/1V/1W/1X/1Y/1Z/1AA/1AB/1AC/1AD/1AE/1AF/1AG/1AH/1AI/1AJ/1AK/1AL/1AM/1AN/1AO/1AP/1AQ/1AR/1AS/1AT/1AU/1AV/1AW/1AX/1AY/1AZ/1BA/1BB/1BC/1BD/1BE/1BF/1BG/1BH/1BI/1BJ/1BK/1BL/1BM/1BN/1BO/1BP/1BQ/1BR/1BS/1BT/1BU/1BV/1BW/1BX/1BY/1BZ/1CA/1CB/1CC/1CD/1CE/1CF/1CG/1CH/1CI/1CJ/1CK/1CL/1CM/1CN/1CO/1CP/1CQ/1CR/1CS/1CT/1CU/1CV/1CW/1CX/1CY/1CZ/1DA/1DB/1DC/1DD/1DE/1DF/1DG/1DH/1DI/1DJ/1DK/1DL/1DM/1DN/1DO/1DP/1DQ/1DR/1DS/1DT/1DU/1DV/1DW/1DX/1DY/1DZ/1EA/1EB/1EC/1ED/1EE/1EF/1EG/1EH/1EI/1EJ/1EK/1EL/1EM/1EN/1EO/1EP/1EQ/1ER/1ES/1ET/1EU/1EV/1EW/1EX/1EY/1EZ/1FA/1FB/1FC/1FD/1FE/1FF/1FG/1FH/1FI/1FJ/1FK/1FL/1FM/1FN/1FO/1FP/1FQ/1FR/1FS/1FT/1FU/1FV/1FW/1FX/1FY/1FZ/1GA/1GB/1GC/1GD/1GE/1GF/1GG/1GH/1GI/1GJ/1GK/1GL/1GM/1GN/1GO/1GP/1GQ/1GR/1GS/1GT/1GU/1GV/1GW/1GX/1GY/1GZ/1HA/1HB/1HC/1HD/1HE/1HF/1HG/1HH/1HI/1HJ/1HK/1HL/1HM/1HN/1HO/1HP/1HQ/1HR/1HS/1HT/1HU/1HV/1HW/1HX/1HY/1HZ/1IA/1IB/1IC/1ID/1IE/1IF/1IG/1IH/1II/1IJ/1IK/1IL/1IM/1IN/1IO/1IP/1IQ/1IR/1IS/1IT/1IU/1IV/1IW/1IX/1IY/1IZ/1JA/1JB/1JC/1JD/1JE/1JF/1JG/1JH/1JI/1JJ/1JK/1JL/1JM/1JN/1JO/1JP/1JQ/1JR/1JS/1JT/1JU/1JV/1JW/1JX/1JY/1JZ/1KA/1KB/1KC/1KD/1KE/1KF/1KG/1KH/1KI/1KJ/1KK/1KL/1KM/1KN/1KO/1KP/1KQ/1KR/1KS/1KT/1KU/1KV/1KW/1KX/1KY/1KZ/1LA/1LB/1LC/1LD/1LE/1LF/1LG/1LH/1LI/1LJ/1LK/1LL/1LM/1LN/1LO/1LP/1LQ/1LR/1LS/1LT/1LU/1LV/1LW/1LX/1LY/1LZ/1MA/1MB/1MC/1MD/1ME/1MF/1MG/1MH/1MI/1MJ/1MK/1ML/1MN/1MO/1MP/1MQ/1MR/1MS/1MT/1MU/1MV/1MW/1MX/1MY/1MZ/1NA/1NB/1NC/1ND/1NE/1NF/1NG/1NH/1NI/1NJ/1NK/1NL/1NM/1NO/1NP/1NQ/1NR/1NS/1NT/1NU/1NV/1NW/1NX/1NY/1NZ/1OA/1OB/1OC/1OD/1OE/1OF/1OG/1OH/1OI/1OJ/1OK/1OL/1OM/1ON/1OO/1OP/1OQ/1OR/1OS/1OT/1OU/1OV/1OW/1OX/1OY/1OZ/1PA/1PB/1PC/1PD/1PE/1PF/1PG/1PH/1PI/1PJ/1PK/1PL/1PM/1PN/1PO/1PP/1PQ/1PR/1PS/1PT/1PU/1PV/1PW/1PX/1PY/1PZ/1QA/1QB/1QC/1QD/1QE/1QF/1QG/1QH/1QI/1QJ/1QK/1QL/1QM/1QN/1QO/1QP/1QQ/1QR/1QS/1QT/1QU/1QV/1QW/1QX/1QY/1QZ/1RA/1RB/1RC/1RD/1RE/1RF/1RG/1RH/1RI/1RJ/1RK/1RL/1RM/1RN/1RO/1RP/1RQ/1RR/1RS/1RT/1RU/1RV/1RW/1RX/1RY/1RZ/1SA/1SB/1SC/1SD/1SE/1SF/1SG/1SH/1SI/1SJ/1SK/1SL/1SM/1SN/1SO/1SP/1SQ/1SR/1SS/1ST/1SU/1SV/1SW/1SX/1SY/1SZ/1TA/1TB/1TC/1TD/1TE/1TF/1TG/1TH/1TI/1TJ/1TK/1TL/1TM/1TN/1TO/1TP/1TQ/1TR/1TS/1TT/1TU/1TV/1TW/1TX/1TY/1TZ/1UA/1UB/1UC/1UD/1UE/1UF/1UG/1UH/1UI/1UJ/1UK/1UL/1UM/1UN/1UO/1UP/1UQ/1UR/1US/1UT/1UU/1UV/1UW/1UX/1UY/1UZ/1VA/1VB/1VC/1VD/1VE/1VF/1VG/1VH/1VI/1VJ/1VK/1VL/1VM/1VN/1VO/1VP/1VQ/1VR/1VS/1VT/1VU/1VV/1VW/1VX/1VY/1VZ/1WA/1WB/1WC/1WD/1WE/1WF/1WG/1WH/1WI/1WJ/1WK/1WL/1WM/1WN/1WO/1WP/1WQ/1WR/1WS/1WT/1WU/1WV/1WW/1WX/1WY/1WZ/1XA/1XB/1XC/1XD/1XE/1XF/1XG/1XH/1XI/1XJ/1XK/1XL/1XM/1XN/1XO/1XP/1XQ/1XR/1XS/1XT/1XU/1XV/1XW/1XX/1XY/1XZ/1YA/1YB/1YC/1YD/1YE/1YF/1YG/1YH/1YI/1YJ/1YK/1YL/1YM/1YN/1YO/1YP/1YQ/1YR/1YS/1YT/1YU/1YV/1YW/1YX/1YY/1YZ/1ZA/1ZB/1ZC/1ZD/1ZE/1ZF/1ZG/1ZH/1ZI/1ZJ/1ZK/1ZL/1ZM/1ZN/1ZO/1ZP/1ZQ/1ZR/1ZS/1ZT/1ZU/1ZV/1ZW/1ZX/1ZY/1ZZ
- This building is sprinklered.

DOOR SCHEDULE

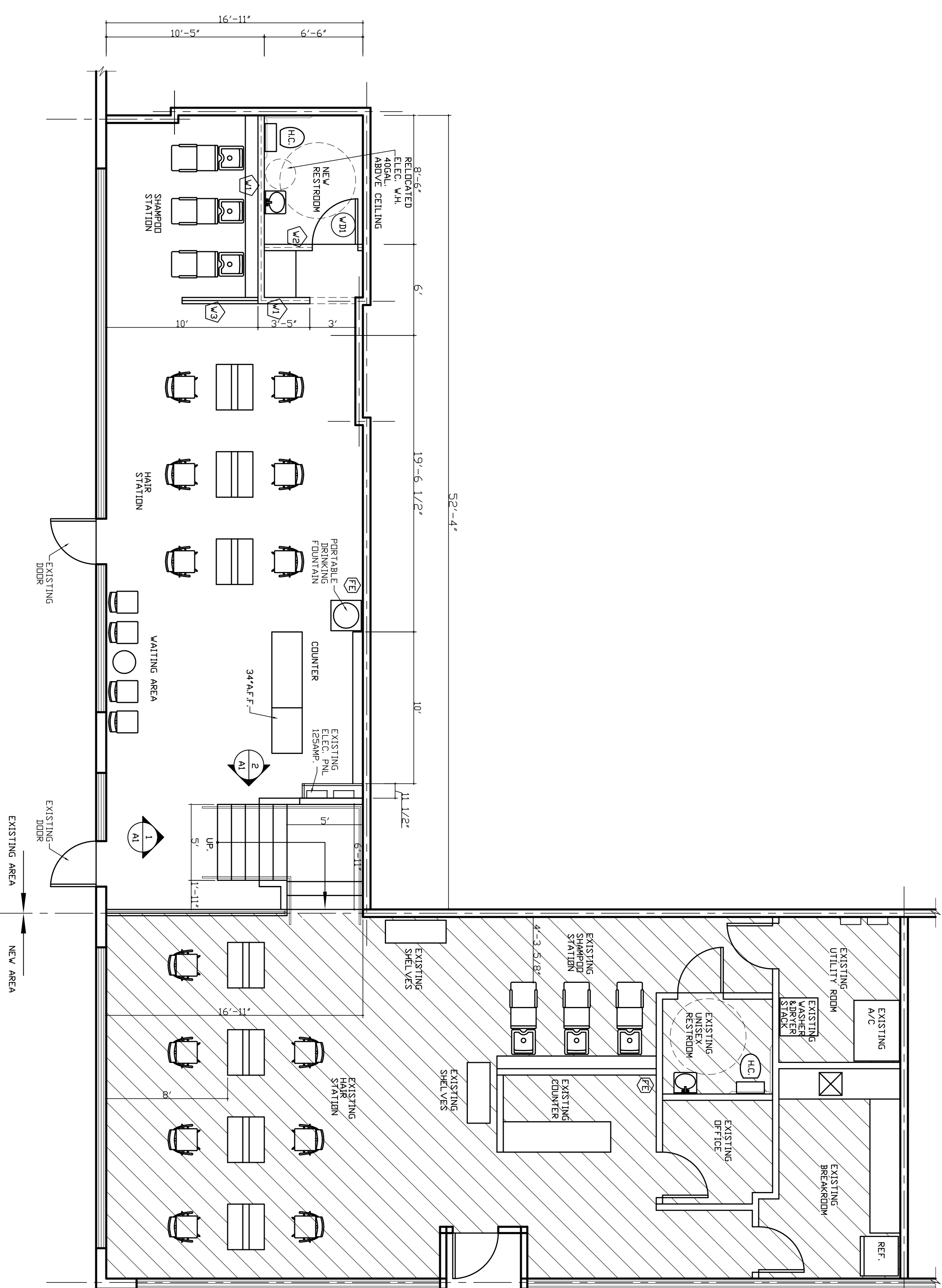
DOOR #	DOOR SIZE	DOOR MATERIAL	DOOR TYPE	DOOR FRAME	HWMR	REMARKS
WD1	3' X 6'-8"	WD.	FLUSH	WD.	PUSH/PULL CLOSER	

NOTE: a. ALL MET. DOOR TO BE MANUF. COATED AND FIELD PAINTED.
b. ALL DOOR HARDWARE TO BE ADA COMPLIANT

FINISH SCHEDULE

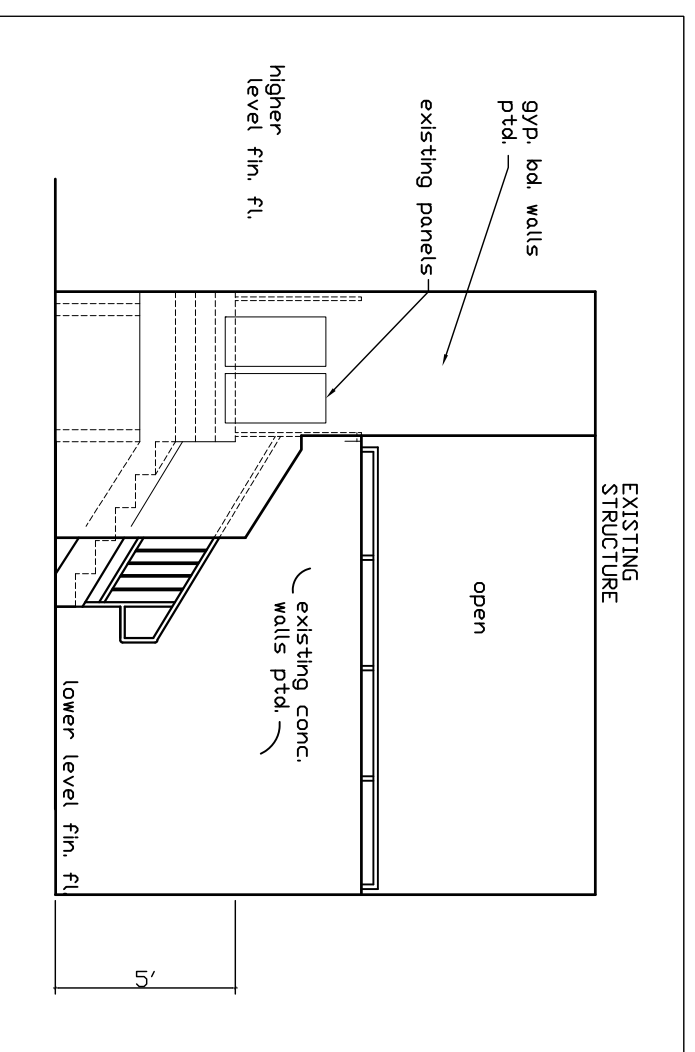
ROOM NAME	WALLS	BASE	FLOOR	CEILING
HAIR STATION AREA	GYP. BD. PTD.	VINYL	C.TILE	OPEN CEILING
SHAMPOO AREA	GYP. BD. PTD.	VINYL	C.TILE	OPEN CEILING
TOILET	5' FRP. PNL.	VINYL	C.TILE	2X2 ACOUSTIC
COUNTER	GYP. BD. PTD.	VINYL	C.TILE	OPEN CEILING

NOTE: a. COLOR TO BE DECIDED BY OWNER.
b. WALL PAINT TO BE LATEX ENAMEL SEMI-GLOSS U.N.O.

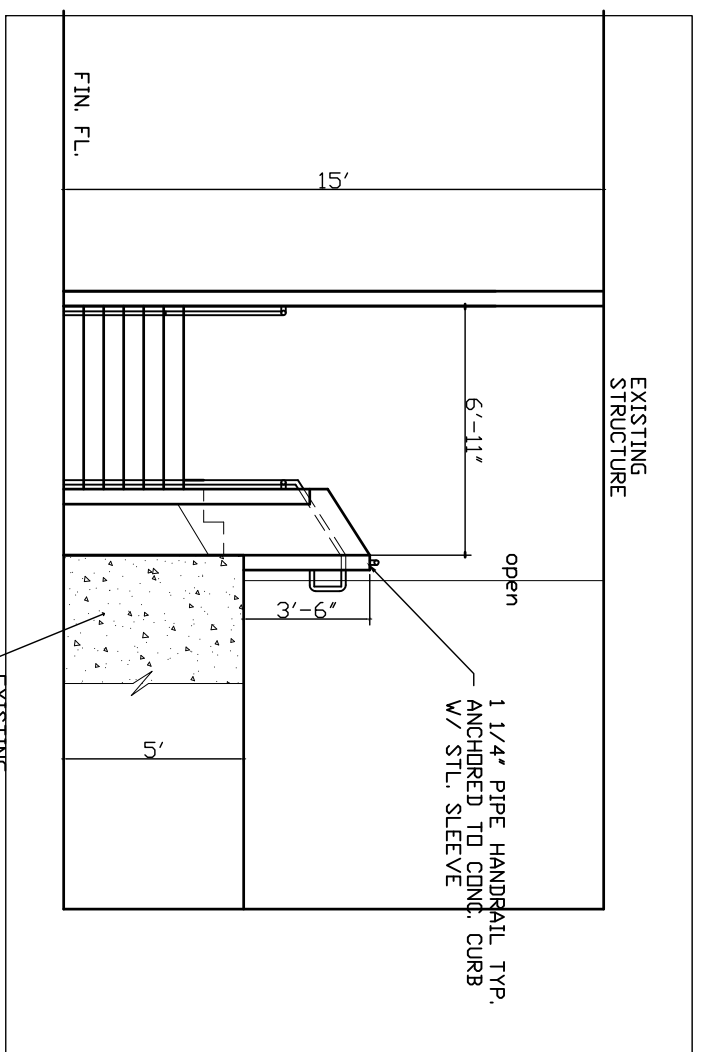


FLOOR PLAN
SCALE: 1/8"=1'-0"
FINE EXTINGUISHER
EXISTING AREA 1,190 SQ.FT.
TOTAL AREA 2,529 SQ.FT.

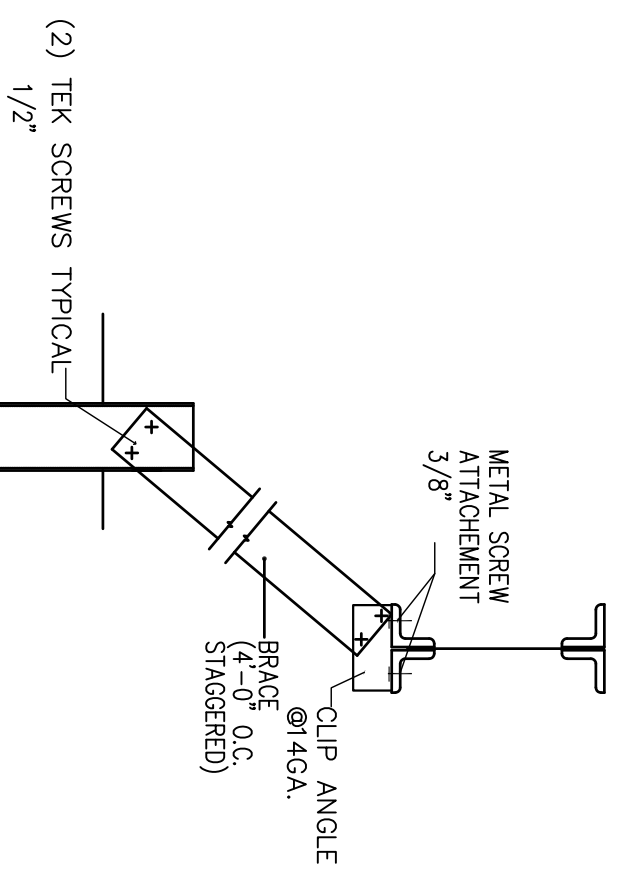
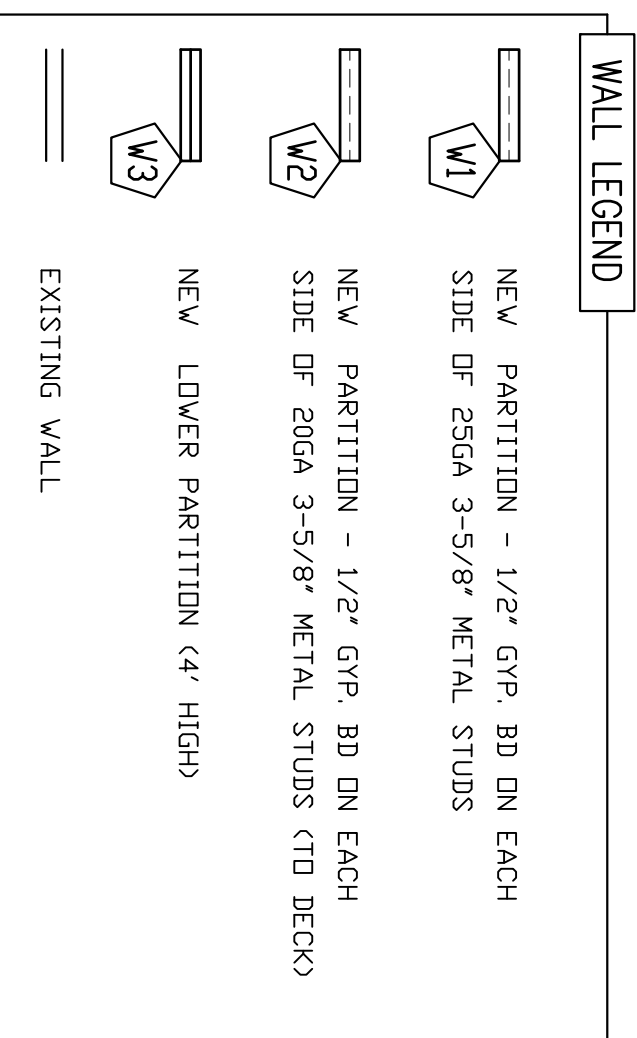
OCCUPANT LOAD CALCULATION
2,290 SQ.FT./100 = 23
BUSINESS AREAS/100 GROSS
23 OCCUPANTS



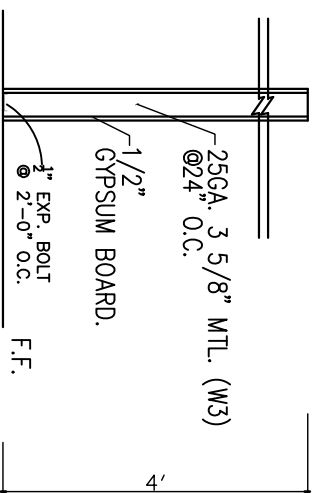
2 STEP DETAIL, TYP.
SCALE: 3/16" = 1'-0"



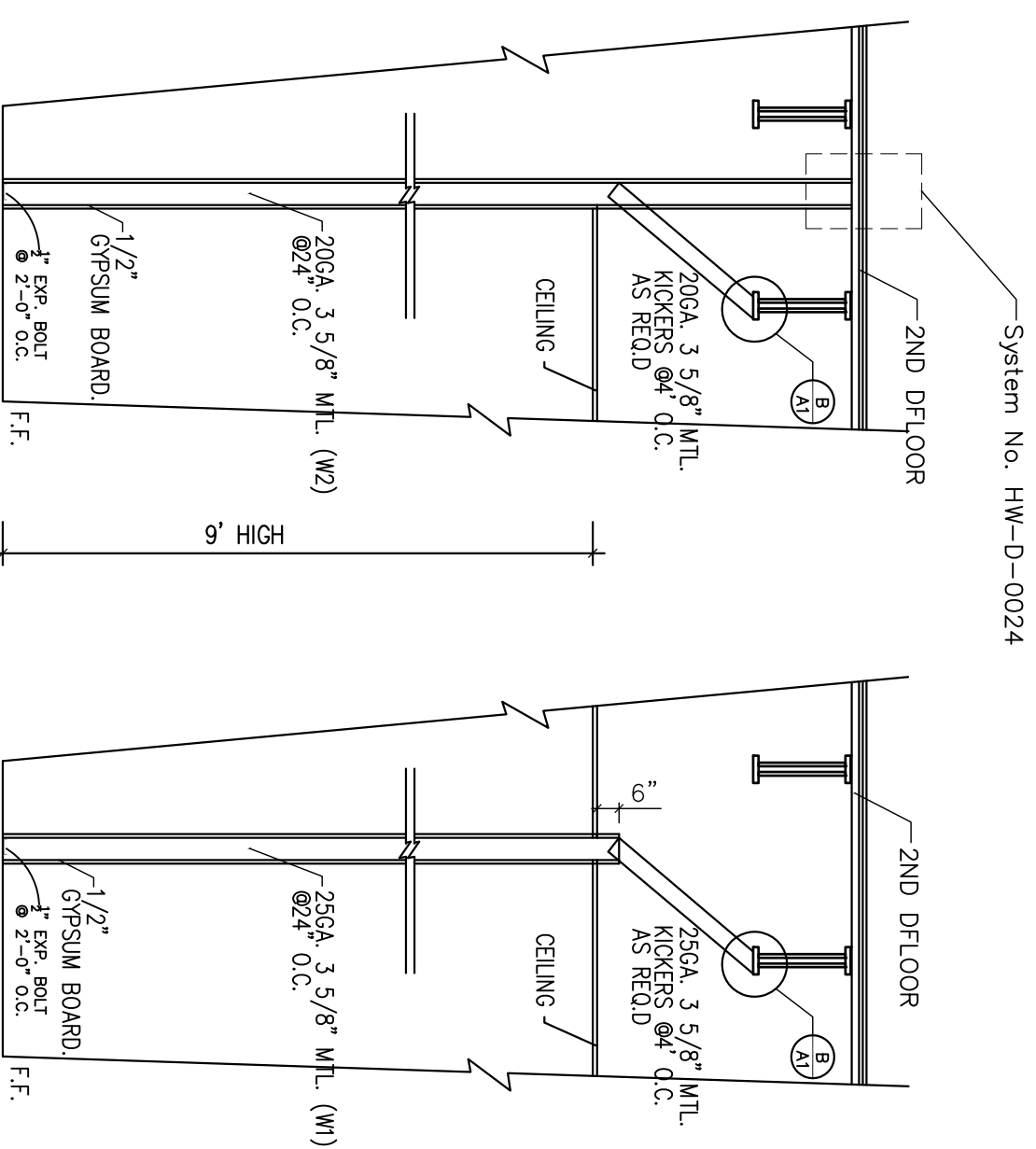
1 STEP DETAIL, TYP.
SCALE: 3/16" = 1'-0"



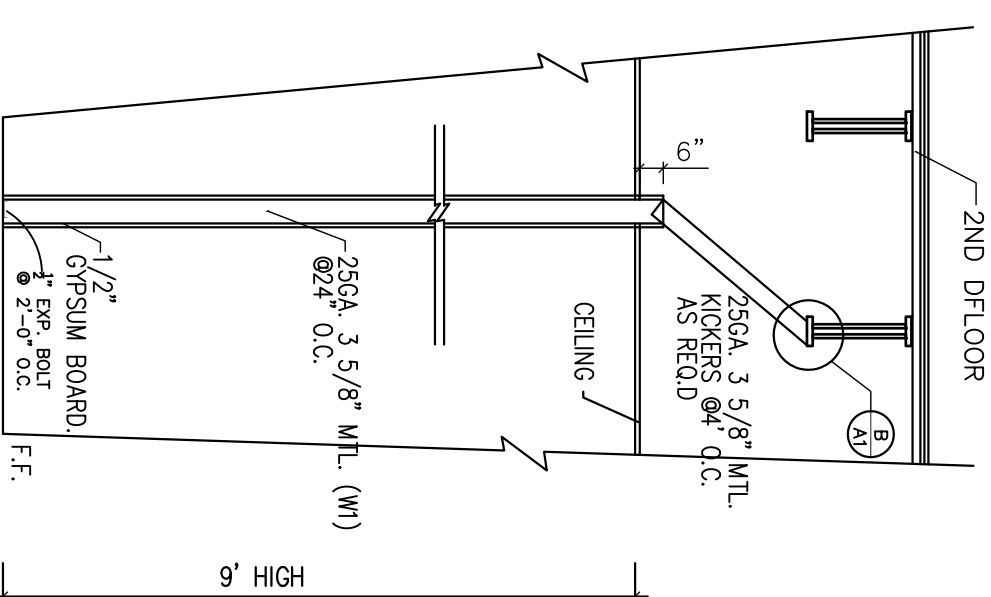
B DETAILS
SCALE: 1/2\"/>



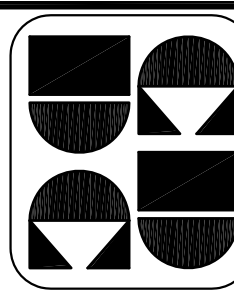
W1 25GA Metal Stud Partition
SCALE: NONE



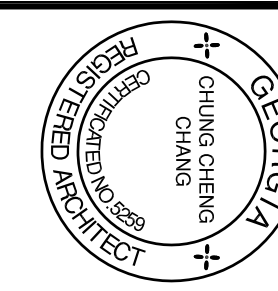
W2 25GA Metal Stud Partition
SCALE: NONE



W3 25GA Metal Stud Partition
SCALE: NONE



CUSTOM DESIGN & DEVELOPMENT CORPORATION
6790 BURWOOD HWY.
SUITE 200
NORBORSS, GA 30071
TEL: (770) 328-8888
FAX: (770) 278-8888



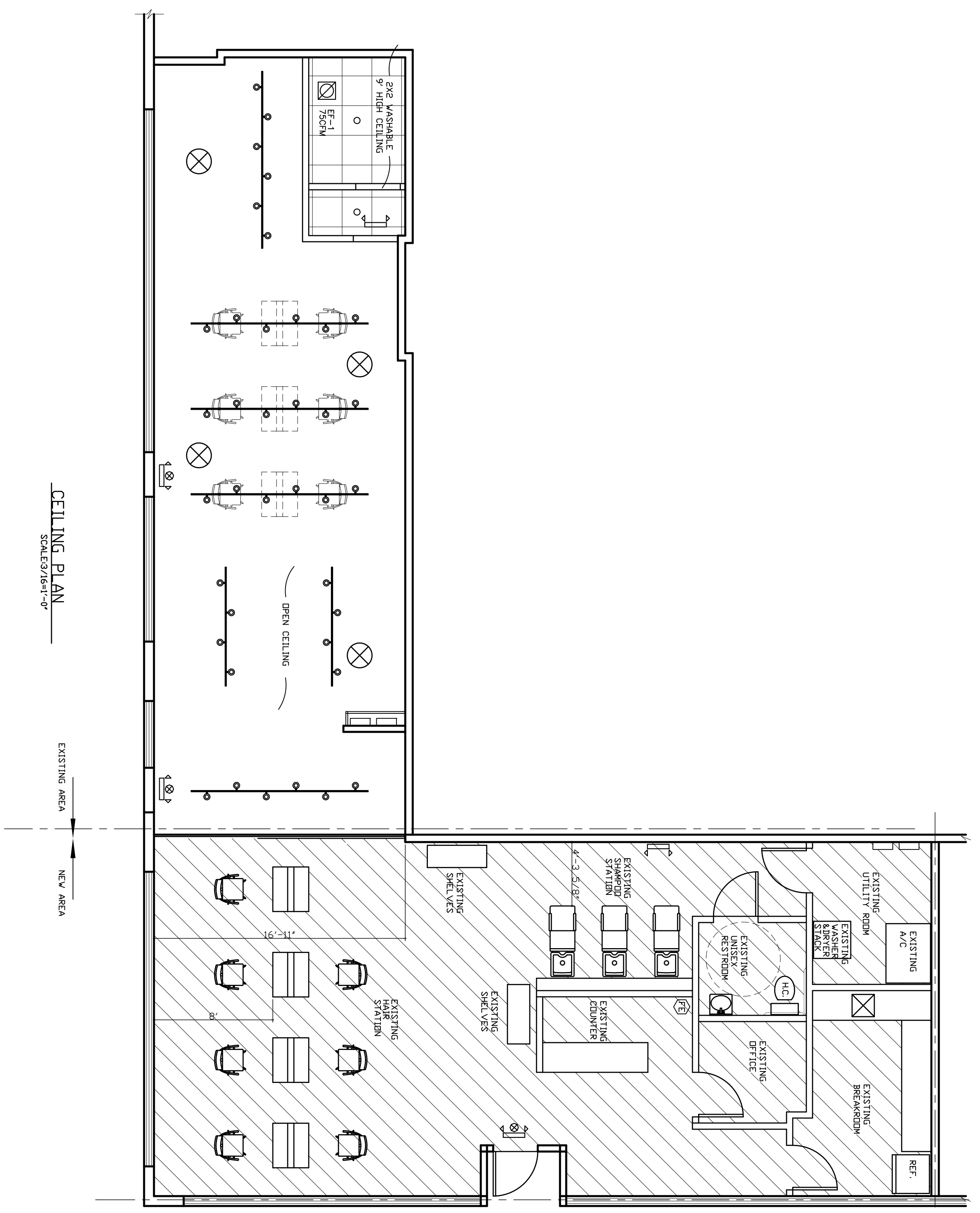
GEORGIA
REGISTERED PROFESSIONAL ARCHITECT

ELEVEN HAIR SALON
29 12th. ST. NW.
Suite #A
ATLANTA, GA 30309

FLOOR PLAN NOTES & SCHEDULE

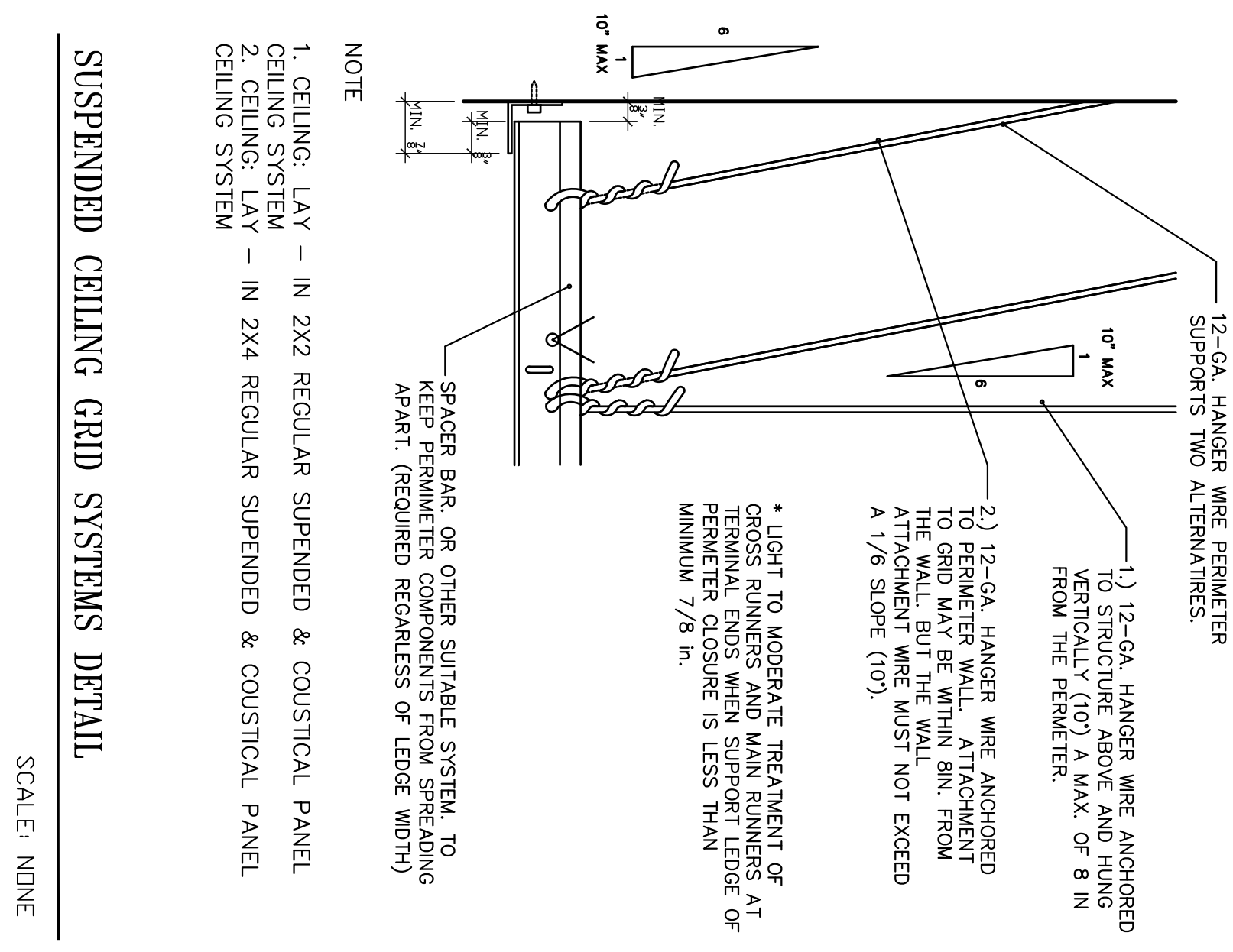
REVISION	BY

DRAWN BY:	
SCALE: AS NOTED	
PROJECT NO:	
DATE: 09/28/18	
SHEET	
A1	
OF SHEETS	



CEILING PLAN
SCALE: 9/8"=1'-0"

- [FIGURE LEGEND]**
- Emergency light fixture, self-contained unit
 - red letter color; double fixture running direction.
 - Emergency light fixture, self-contained unit
 - Fluorescent Light, 40W 4' Strip-ly-in fixture
 - Fluorescent Light, 40W 2x4
 - Air Return Grill
 - Air Supply
 - Exhaust Air Motor Operated
 - Spot light (18W LED)
 - Track light



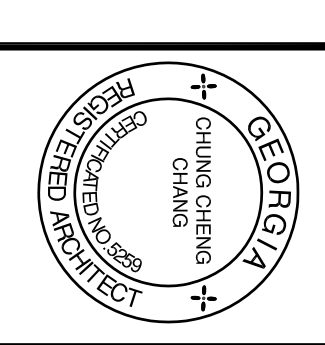
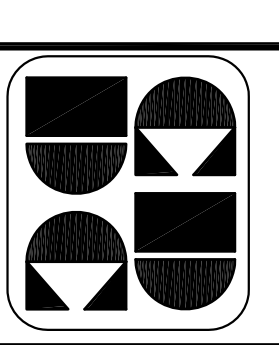
SUSPENDED CEILING GRID SYSTEMS DETAIL
SCALE: NONE

NOTE
1. CEILING: LAY - IN 2X2 REGULAR SUSPENDED & COUSTICAL PANEL
2. CEILING: LAY - IN 2X4 REGULAR SUSPENDED & COUSTICAL PANEL
CEILING SYSTEM

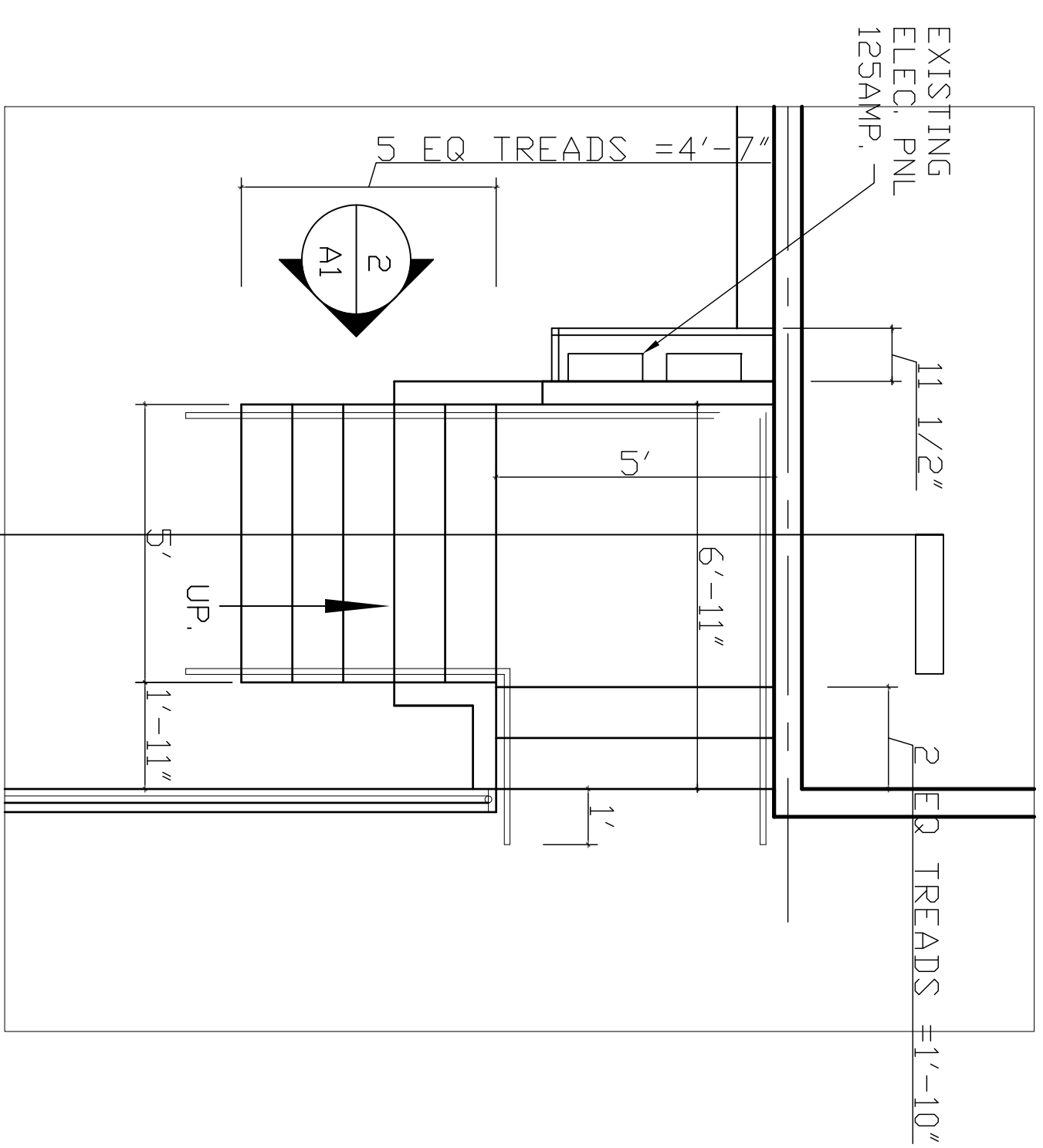
REVISION	BY

CEILING PLAN
NOTES & SCHEDULE

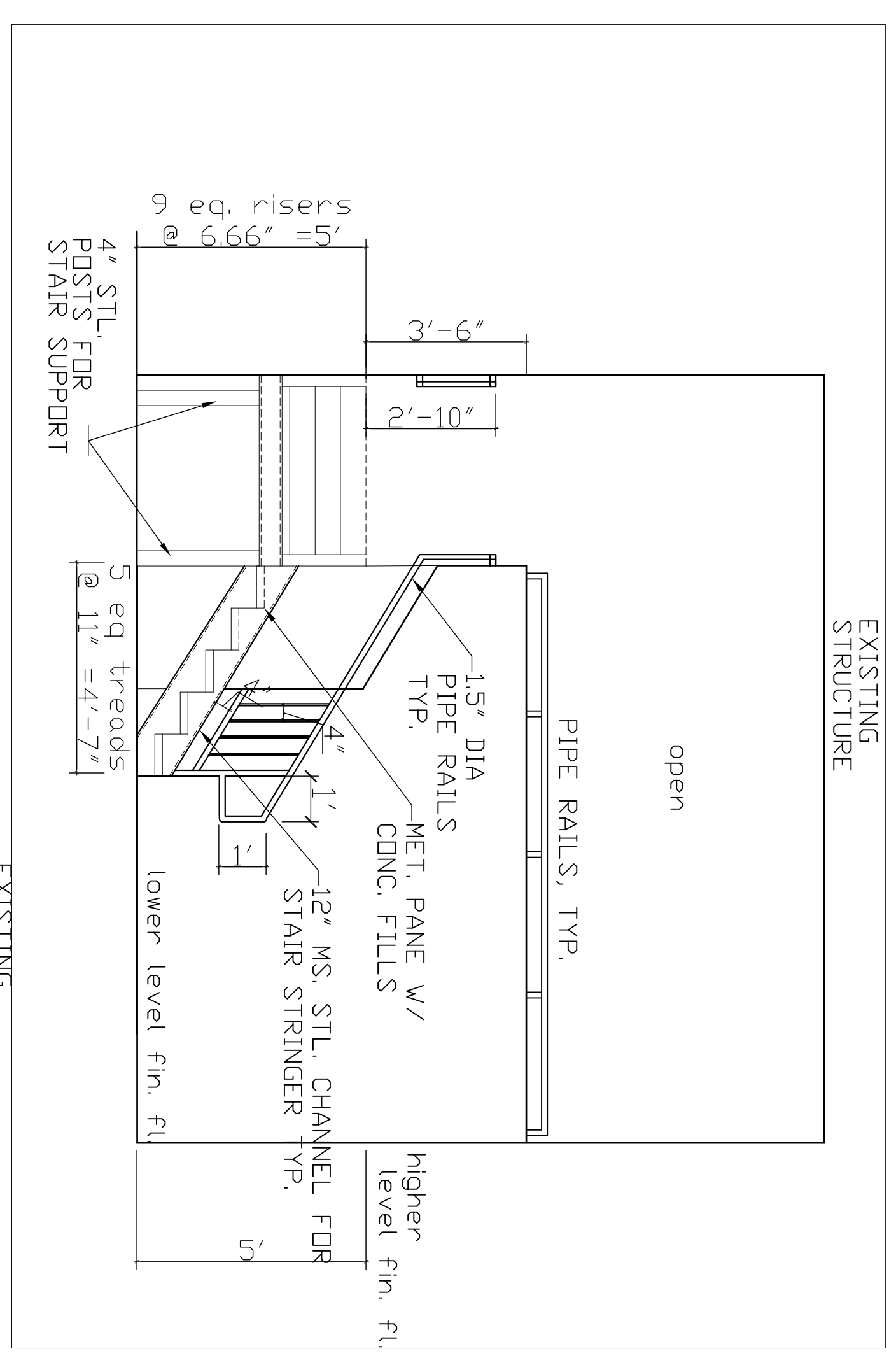
CUSTOM DESIGN & DEVELOPMENT CORPORATION
5220 BIRWOOD HWY.
SUITE 200
NORCROSS, GA 30071
TEL: (770)-566-8888
FAX: (770)-278-8886



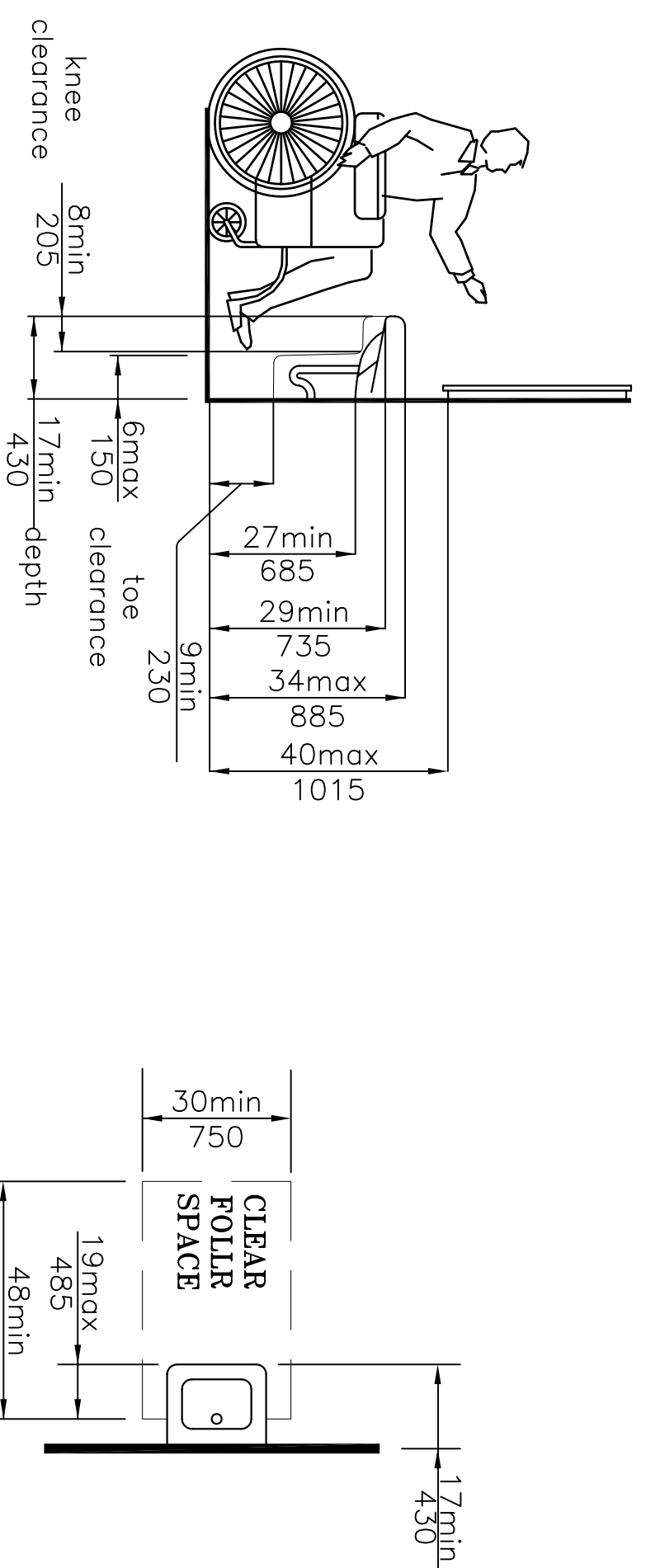
ELEVEN HAIR SALON
29 12th. ST. NW.
Suite #A
ATLANTA, GA 30309



1 STAIR PLAN
SCALE: 3/8=1'-0"

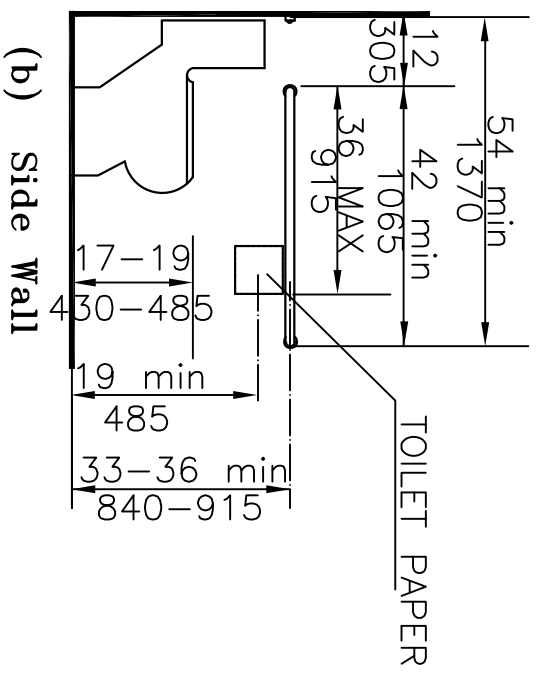
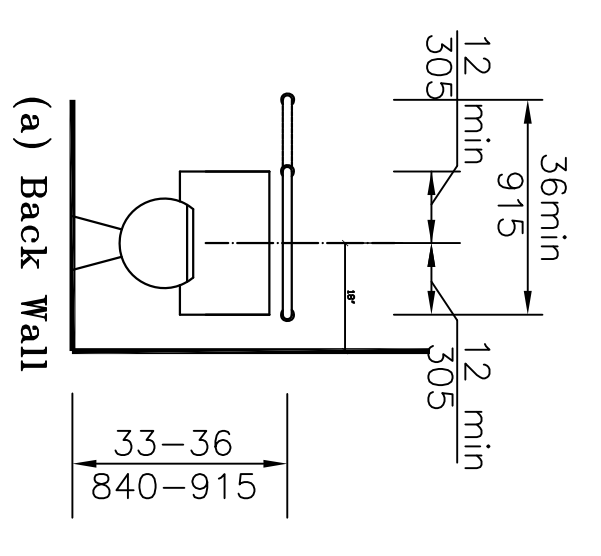


1 STEP DETAIL, TYP.
SCALE: 3/8=1'-0"

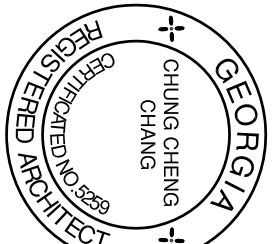
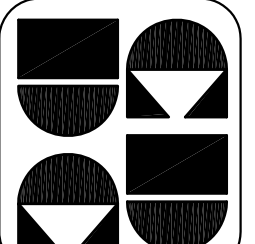


LAVATORY CLEARANCES

CLEAR FLOOR SPACE AT LAVATORIES



GRAB BARS & PISTURES MOUNTING DETAIL

				ELEVEN HAIR SALON 29 12th. ST. NW. Suite #A ATLANTA, GA 30309	
CHUNG CHENG CHANG REGISTERED ARCHITECT		CUSTOM DESIGN & DEVELOPMENT CORPORATION 5720 BURBANK HWY. SUITE 200 NORFOLK, VA 23071 TEL: (770)-322-8888 FAX: (770)-272-8888		STAIR DETAILS ADA DETAILS NOTES & SCHEDULE	
REVISION BY	DATE: 09/28/18 SHEET	DRAWN BY:	SCALE: AS NOTED PROJECT NO:	A3 SHEETS	

CIRCUIT NO	TO SERVE	LOAD		M.L.O.	CIRCUIT BREAKER TRIP	LOAD	TO SERVE
		KW	TRIP POLES				
1	LIGHTS (COUNTER AREA)	1.0	20/1		100/3	7.6	MAIN
3	LIGHTS (HAIR STATION)	1.0	20/1				4
5	FAN & LIGHTS (RESTROOM)	1.0	20/1				6
7	STORE SIGN	1.0	20/1				8
9	RECEPT (COUNTER AREA)	1.0	20/1			6.2	EXISTING A/C #1
11	RECEPT	1.0	20/1			4.0	EXISTING CONDENSING UNIT
13	RECEPT (HAIR STATION)	1.0	20/1				14
15	RECEPT (HAIR STATION)	1.0	20/1			4.5	WATER HEATER
17	RECEPT (HAIR STATION)	1.0	20/1				18
19							20
21							22
23							24
27							26
28							28
29							30
31							32
33							34
35							36
37							38
39							40
41							42

CONNECTED LOAD : 31.3 X 1000 / 1,732 / 208 = 87.0 A

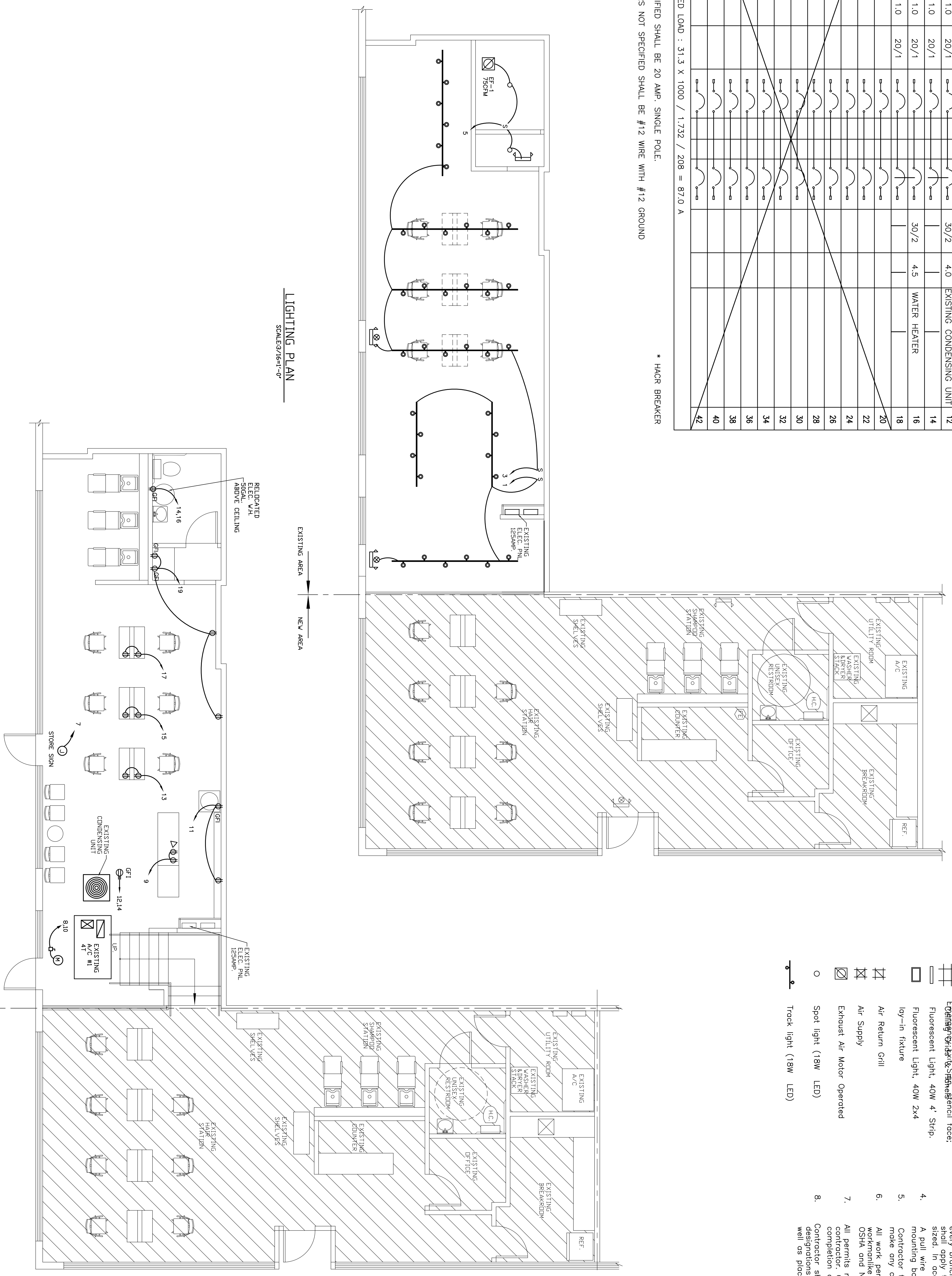
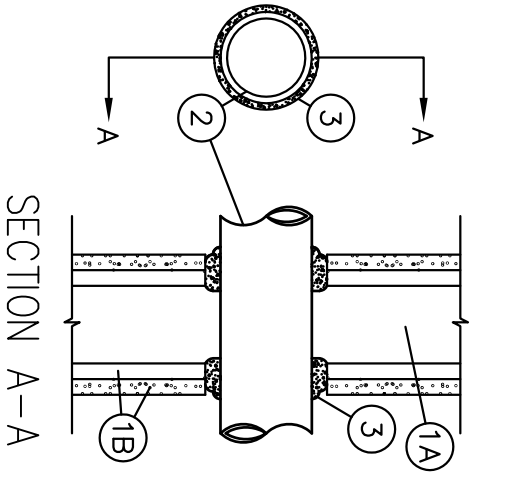
ALL BRANCH BREAKERS NOT SPECIFIED SHALL BE 20 AMP. SINGLE POLE.
ALL BRANCH CIRCUITS CONDUCTORS NOT SPECIFIED SHALL BE #12 WIRE WITH #12 GROUND

PANEL A
208Y/120V 3Ø 4W, 10000 A.I.C.

- [FIXTURE LEGEND]**
- Emergency light fixture, self-contained unit
 - red letter color, double fixture running direction.
 - Fluorescent light, 40W 4' Strip.
 - Fluorescent light, 40W 2x4 lay-in fixture
 - Air Return Grill
 - Air Supply
 - Exhaust Air Motor Operated
 - Spot light (18W LED)
 - Track light (18W LED)

- ELECTRICAL POWER NOTES**
- Drawing are diagrammatic and indicate general arrangement of system and work. Follow drawing in laying out work and check drawings of other trades to verify existing space and conditions. Main design requirements but adjust as required to fit. Contractor shall provide complete and working system.
 - Verify locations and orientation of outlets and switches in finished rooms with the architectural drawing and owner's representatives. Locations of equipment and other moveable items are subject to modification and shall be verified with owner's representatives prior to installation.
 - Each panel board furnished under this contract shall be complete with a ground bus. This ground bus shall have a conductor grounding location for the ground bus. The conductor grounding location shall be sized in accordance with Table 250-122 of the National Electrical Code (NEC). A pull wire shall be installed for telephone equipment.
 - Contractor to verify conditions of existing panels, meters and service drips and make any changes required by this design or the NEC.
 - All work performed by the contractor on this project shall be performed in accordance with the NEC, OSHA and National Electrical Safety.
 - All permits required for the construction of this work shall be obtained by the contractor. Copies of all permits shall be turned over to the owner at the completion of work.
 - Contractor shall provide "As Built" panel schedules complete with circuit designations and connected load data to the owner upon completion of work as well as placing a copy on the inside of the door of each panel.

System No. W-L-1001.
(Formerly system No. 147)
F Ratings - 1,2,3 and 4hr (see items 2 and 3)
T Ratings - 0,1,2,3 and 4hr (see item 3)
L Ratings At Ambient - less than 1 CM/bsq ft
L Ratings At 400° - less than 1 CM/bsq ft



LIGHTING PLAN
SCALE: 3/16"=1'-0"

POWER PLAN
SCALE: 3/16"=1'-0"

**LIGHTING PLAN
POWER PLAN
NOTES & SCHEDULE**

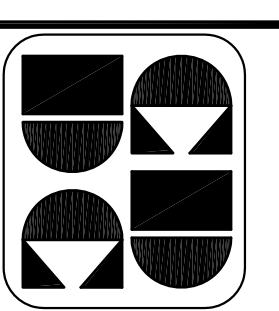
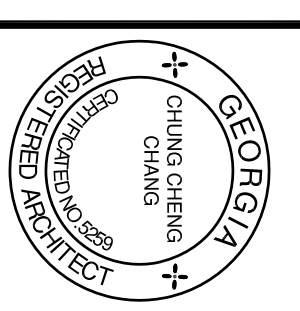
REVISION	BY

DRAWN BY:	
SCALE:	AS NOTED
PROJECT NO.:	
DATE:	09/28/18
SHEET	

FD
SHEETS

"ISSUED/RELEASED FOR CONSTRUCTION"

ELEVEN HAIR SALON
29 12th. ST. NW.
Suite #A
ATLANTA, GA 30309



**CUSTOM DESIGN
&
DEVELOPMENT
CORPORATION**
5750 BIRWOOD HWY.
SUITE 200
NORBORNS, GA 30071
TEL: (770)-548-8888
FAX: (770)-578-8888

MECHANICAL NOTES

- Mechanical contractor shall obtain the mechanical permit for the work.
- Contractor shall make the existing background air condition equipment operable for the intended use to meet the current code requirements.
- Duct work shall pass leak test.
- All duct work shall have proper fire insulation and shall have access door to clean inside of the ducts.
- Clean all existing air handling diffusers in the space.
- All fans supplying more than 2,000 cfm shall be installed with a smoke detector in compliance with Section 605.2.1 of the IMC. The smoke detector shall be wired to stop the fan upon detection of smoke.

AIR CALCULATION

FRESH AIR PROVIDED BASED ON IMC TABLE 403.3 50 CFM/PERSON AT NON-SMOKING AREA AND REQUIRE FRESH AIR CALCULATION AS FOLLOWS:

- NON SMOKING
 - 1. HAIR AREA (470 SF)

$$(25/1000) \times (470) = (11.75 \times 7.5) = (470 \times 0.06) = (88 + 28) = 116$$
 - 3. RECEPTION AREA (183 SF)

$$(30/1000) \times (183) = (5.49 \times 3) = (27 + 11) = 38$$
 - 5. CORRIDOR AREA (140 SF)

$$(140 \times 0.06) = 8$$
- 162 CFM (FRESH AIR REQUIRED)
- 320 CFM (FRESH AIR REQUIRED)

NOTE:
Low pressure insulated flexible duct shall be designed in accordance with ACCA (Air Conditioning Contractors of America) duct sizing calculation based on a friction loss of 0.1.
The degree and amount of radius bends will also affect the calculated air flow. route duct to prevent oval flex as recommended by the manufacturer. The following chart is based on straight runs and is taken from the ACCA duct sizing calculations.

CFM	FLEXDUCT DIAMETER
0 - 80	6"
81 - 165	8"
166 - 300	10"
301 - 500	12"
501 - 650	14"

FAN SCHEDULE

MARK	LOCATION	TYPE	MANUFACTURER & MODEL NO.	MIN. CFM	E.S.P. (INWG)	FAN SPEED (RPM)	BONE TYPE	ELECTRICAL DATA	CONTROL SCHEDULE	ACCESSORIES
EF-1	TOILET	CEILING MOUNT	GREENHECK 2500	75	0.25	0.25	DIRECT	5WV 120V/1	A	

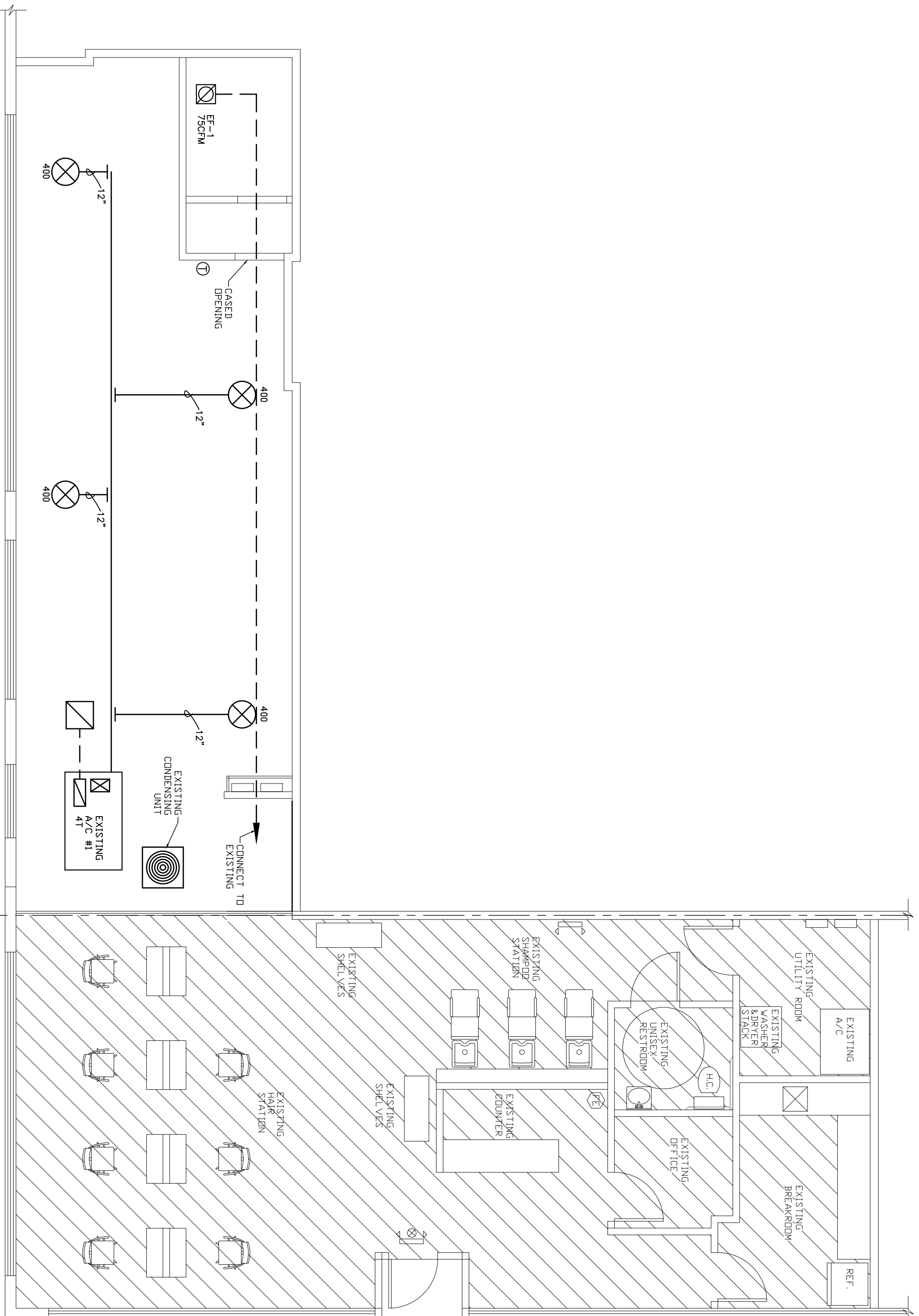
NOTES:
1. SCREEN
2. BACKUP DAMPER
3. 30" HEAT PIPE
4. INTEGRAL DISCONNECT SWITCH
5. UL

CONTROL:
A. INTERLOCK W/ LIGHTS

EXISTING SPLIT SYSTEM UNIT SCHEDULE

TAG	SERVICE	TYPE	SA CFM	DA CFM	ESP INWG	COOLING			HEATING			ELEC CHK	EER	NOTES
						TOTAL BTU	SENS BTU	ENT F BTU	TOTAL BTU	INCO BTU	VAV/2			
A/C #1	SEE DRAWING	SPLIT	1600	320	0.4	3/4	25000	26500	75/63	32000	16000	230/7/60	13.0	EXISTING

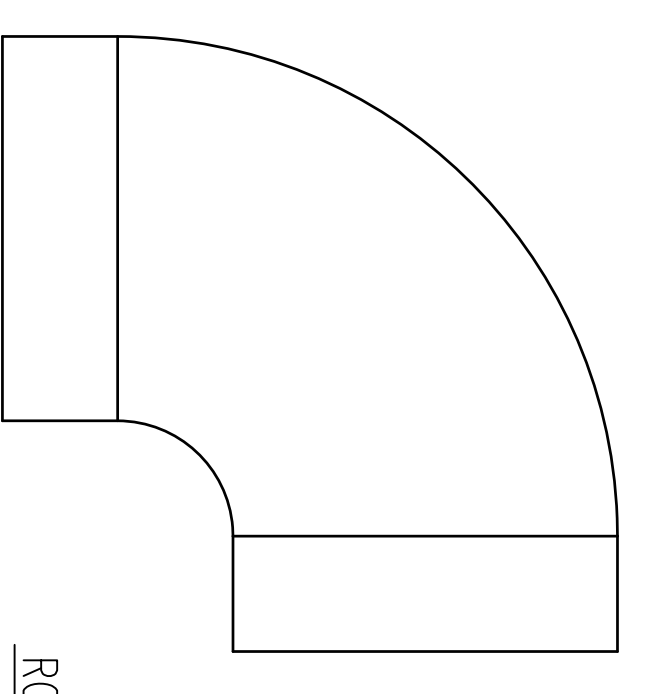
1. HORIZONTAL FLOW
2. 30" HEAT PIPE, BACKUP HEAT INWV
3. CONSTANT SPEED FAN
4. 7. MOUNTED DISCONNECT SWITCH WITHIN 6 FT



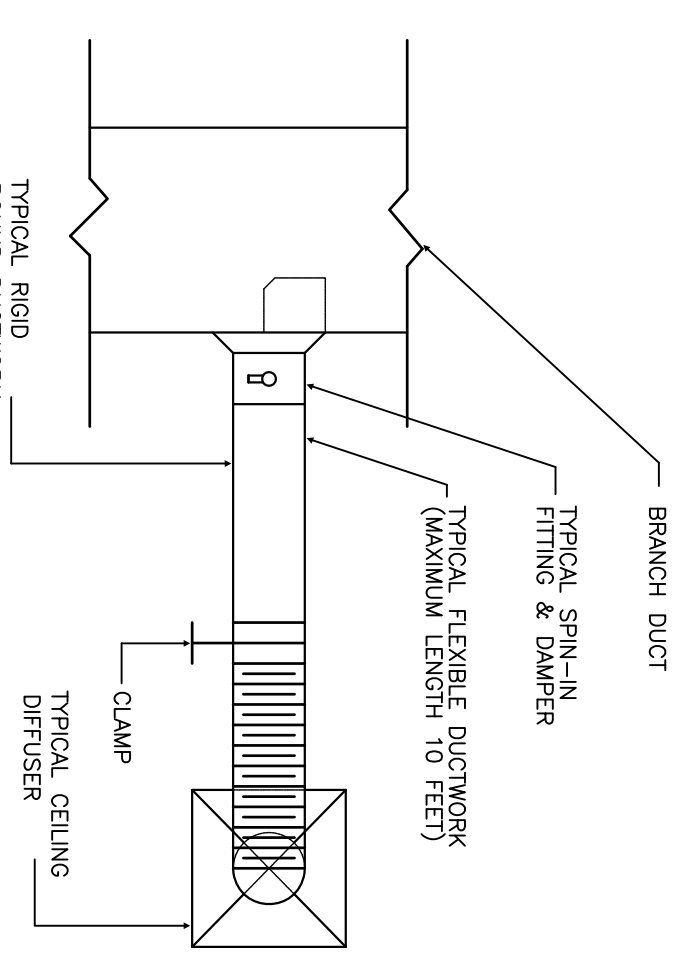
HVAC PLAN

SCALE: 3/8"=1'-0"

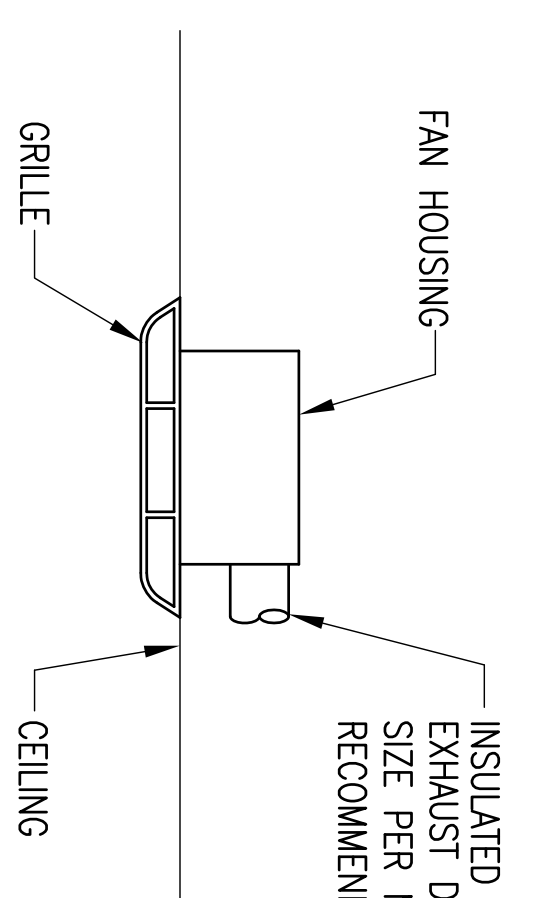
PROGRAMMABLE THERMOSTAT ELECTRONIC



ROUND ELBOW - DETAIL
NOT TO SCALE



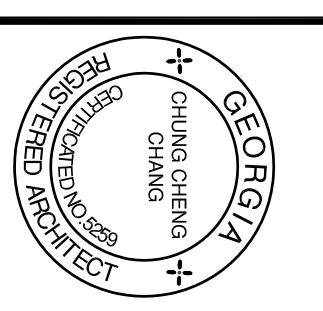
TYPICAL RIGID ROUND DUCT TAKE - OFF
NOT TO SCALE



EXHAUST FAN DETAIL
NOT TO SCALE

MECHANICAL PLAN NOTES & SCHEDULE

CUSTOM DESIGN & DEVELOPMENT CORPORATION
5720 BIRWOOD HWY.
SUITE 200
NORCROSS, GA 30071
TEL: (770)-528-8866
FAX: (770)-578-8866



ELEVEN HAIR SALON
29 12th. ST. NW.
Suite #A
ATLANTA, GA 30309

REVISION BY:
DRAWN BY:
SCALE: AS NOTED
PROJECT NO:
DATE: 09/28/18
SHEET
M1
OF SHEETS

